



Illinois State Board of Education

100 North First Street • Springfield, Illinois 62777-0001
www.isbe.net

James T. Meeks
Chairman

Tony Smith, Ph.D.
State Superintendent of Education

January 14, 2019

TO: The Honorable J.B. Pritzker, Governor
The Honorable William E. Brady, Senate Minority Leader
The Honorable John J. Cullerton, President of the Senate
The Honorable Jim Durkin, House Minority Leader
The Honorable Michael J. Madigan, Speaker of the House

FROM: Tony Smith, Ph.D. 
State Superintendent of Education

SUBJECT: Illinois State Board of Education 2018 Annual Report

This report, submitted in compliance with 105 ILCS 5/1A-4E, provides a discussion of the overall condition of education in Illinois. Information is included concerning student and teacher demographics; data on teacher and administrator certification; federal, state, and local resources; and other data about Illinois education.

If you have questions or comments, please contact Amanda Elliott, Co-Director of Legislative Affairs at (217) 782-6510.

cc: Secretary of the Senate
Clerk of the House
Legislative Research Unit
State Government Report Center



Illinois State Board of Education



2018 ANNUAL REPORT

James T. Meeks, *Chairman*
Tony Smith, Ph.D., *State Superintendent*

STATE BOARD OF EDUCATION



Tony Smith, Ph.D.
State
Superintendent of
Education

The State Board of Education consists of nine members who are appointed by the Governor with the consent of the Senate.

Board members serve four-year terms, with membership limited to two consecutive terms.

The Board appoints the State Superintendent of Education, who may be recommended by the Governor.



James T. Meeks
Chairman
Chicago



Eligio Cerda Pimentel
Vice Chair
Oak Park



Cesilie Price
Secretary
Lake Forest



Ruth Cross
Naperville



Lula Ford
Chicago



Mitch Holzrichter
Chicago



Craig Lindvahl
Effingham



Susie Morrison
Carlinville



Kevin Settle
Mount Vernon

2018

ANNUAL REPORT



Illinois State Board of Education



Illinois State Board of Education

100 North First Street • Springfield, Illinois 62777-0001
www.isbe.net

James T. Meeks
Chairman

Tony Smith, Ph.D.
State Superintendent of Education

January 2019

To all residents of Illinois:

We celebrated two one-year anniversaries this year: The anniversary of the U.S. Department of Education approving the Illinois Every Student Succeeds Act (ESSA) Plan and the anniversary of the Illinois General Assembly passing, and Governor Bruce Rauner signing, Senate Bill 1947, the new Evidence-Based Funding (EBF) formula for Illinois public schools.

These milestones reflect a tremendous amount of work and collaboration to create the conditions for every school in every community to support the whole child. The approval of our support and accountability system and the enactment of EBF expanded the infrastructure of the Illinois State Board of Education (ISBE), which will allow us to know our districts better so that we can serve them well.

As part of the state's new [support and accountability](#) system for all schools, each school's Report Card includes a designation—a descriptor of how well the school is meeting the needs of all students, based on [10 measures](#) of performance. The designation provides transparency for families and communities and identifies the highest-need schools to receive additional support through the IL-EMPOWER school improvement process.

Evidence-Based Funding allows Illinoisans to have honest dialogue about who is included or excluded from high-quality educational opportunities. The EBF formula directs more money to communities in the greatest need. ESSA and EBF represent two radically different and fairer systems that empower us to push forward in our commitment to increasing opportunities for all children and families, particularly those who have been marginalized and least well-served.

The deep structural inequity we see in our schools today did not happen by accident. Historical and ongoing institutional policies, programs, and practices contribute to disparate and statistically predictable educational outcomes for all Illinois students and, specifically, for historically marginalized and underserved student populations. To counter the impact of past policy means not only rectifying where possible the effects of these policies, programs, and practices, but also proactively and positively encouraging fair access and equitable support for our future.

This year, the State Board adopted values and beliefs to guide ISBE's practice:

- We believe that everyone has the right and ability to learn and that we have ethical, moral, and legal responsibilities to set high expectations and ensure that every student achieves success.

- We believe that we must provide equity, access, and opportunity for every student and eliminate opportunity and achievement gaps in all public schools across Illinois.
- We believe that ending disparities and gaps in achievement begins with the delivery of quality early learning programs and appropriate parent engagement and support so that by June 30, 2027 and beyond, this State has a kindergarten through grade 12 public education system with the capacity to ensure the development of all persons to the limits of their capacities.
- We believe that communities, parents, teachers, educational leaders, and community-based organizations have unique and important solutions to improve outcomes for our students.
- We believe that teachers and leaders in every school and classroom in Illinois need the training and support required to demonstrate competency in their content, their ability to adjust their pedagogy to student need, their ability to establish positive relationships with all students including students whose background and life experience is different from theirs, and their understanding of human development.

We have high expectations for our students, and we know that each and every student can meet them. Illinois students have made significant gains in college and career readiness: The 2018 Illinois Report Card shows that the percentage of students enrolling in college 12 months after graduation from high school increased to nearly three-quarters of all graduates, up from 68.7 percent just four years ago. Illinois' dedicated and talented educators are doing incredible work to create the conditions for all our students to thrive.

Diverse, well-trained, and well-supported educators helped students across the state achieve meaningful growth in 2018. ISBE is building peer-to-peer learning tools and systems to support educators in doing this work. The new Superintendents-Only Support (SOS) Line enables superintendents to contact ISBE executive staff immediately with a question or concern, or if they need a thought partner. The Peer Finder tool strengthens connections by allowing users to locate similar schools and districts around the state based on certain characteristics. The Advanced Compare Schools option on the Illinois Interactive Report Card further facilitates comparisons among schools utilizing the data available in the Report Card. To provide educators with new ideas and approaches to explore, ISBE storytellers are traveling the state to capture and share promising practices implemented by districts.

The State Board charged ISBE one year ago with thoroughly investigating the teacher workforce crisis in Illinois. The September 2018 "Teach Illinois: Strong Teachers, Strong Classrooms" report addresses the state's record number of unfilled positions and proposes research-backed and targeted solutions. The State Board approved recommendations developed from the "Teach Illinois: Strong Teachers, Strong Classrooms" year of study to expand and diversify the state's highly qualified teacher workforce. The recommendations, informed by public comment, remove barriers and create new avenues of entry into the profession while maintaining high standards.


Every student in every Illinois school deserves to feel supported and valued by caring adults and challenged by relevant and rigorous content. Research has shown that belonging in schools has a

direct impact on academic performance; belonging defines who benefits from relationships and who has access to engaging instruction. To support our students' social and emotional well-being authentically, we must acknowledge and confront the institutionalized barriers that continue to limit students' opportunities to succeed. ISBE is committed to advocating for all schools to have the resources to create safe and healthy learning environments for all students.


When we all do better, we all do better. Through our commitment, collaboration, and willingness to stay engaged with each other, Illinois has been recognized as a leader in working to create fair access to quality education for all students. We at ISBE will continue our efforts to understand each district's unique strengths and challenges, as well as the opportunities within our funding and support and accountability systems to ensure all children in Illinois receive the equitable supports they deserve.

Thank you for your partnership in serving Illinois students, families, and communities and your investment in our state's future.

Sincerely,



James T. Meeks
Chairman



Tony Smith, Ph.D.
State Superintendent

Table of Contents

2018 Illinois Teacher of the Year	1
2018 Condition of Education	2
State, Local and Federal Resources	9
State, Local and Federal Resources for Elementary and Secondary Education	9
Elementary and Secondary School Income From Local Sources	10
Net Lottery Proceeds Compared to Total Appropriations to ISBE	11
State Revenues by Source	12
Appropriations by Major Purpose.....	13
Expenditures by Major Purpose	14
State Mandated Categorical Grant Programs	15
Receipts and Expenditures for Illinois Public School Districts.....	16
Public Schools Finance Statistics	17
Total Appropriations Per Pupil Enrolled.....	18
State Average Operating Expense Per Pupil	19
Average Operating Expense Per Pupil by Type of District	19
Total Funding.....	20
State Funding	20
Local Funding	20
Federal Funding	20
Percentages of State, Local and Federal Funding	21
Schools and Districts	22
A Profile of Illinois Public Schools in 2017-18	22
Illinois Public School Districts by Type	24
Comparison of Public School Districts by Type and Enrollment 2007-08 and 2017-18.....	25
Comparison of Public and Nonpublic Attendance Centers 2007-08 and 2017-18	25
Public School Recognition Committee Act or Omissions Status Report for the 2017-18 School Year	26
Students	27
Public and Nonpublic Prekindergarten Through Postgraduate Fall Pupil Enrollment.....	27
Comparison of Public School Enrollment 2007-08 and 2017-18	28
Comparison of Public School Enrollment by Racial/Ethnic Distribution 2007-08 and 2017-18	29
Comparison of Nonpublic School Enrollment 2007-08 and 2017-18	29

English Learner Enrollment by Native Language 2017-18	30
English Learners by English Language Proficiency Status and School Year Outcome 2017-18	31
School Districts That Served More Than 1,000 English Learners 2017-18	32
English Learner Enrollment	33
Number of Children Served by Preschool For All (PFA) and PFA Expansion (PFAE) State Funded Programs	33
High School Graduates.....	34
2017-18 High School Dropout Rate by Grade Level, Gender, and Race/Ethnicity	35
Selected Report Card Variables Statewide Trend Data	36
Student Performance	37
State Accountability Assessments	37
Dynamic Learning Maps (DLM).....	38
2018 Advanced Placement Performance	39
National Assessment of Educational Progress (NAEP) Average Student Scores for Illinois and U.S. Public Schools	39
National Assessment of Educational Progress (NAEP Comparison of Illinois and U.S. Achievement Gaps	40
Educators.....	41
Number of Select Public School Personnel by Gender Full-Time Equivalents (FTE).....	41
Nonpublic School Personnel Full-Time Equivalents (FTE) 2017-18	41
Salaries for Select Full-Time Public School Personnel 2017-18	42
Public School Pupil-to-Teacher Ratios.....	42
Educator Licenses Issued by Evaluation, Entitlement, and Exchange	43
Educator Licenses Issued by Type.....	43
Educator Endorsements Issued by Type	44
Educator Certification/Licensure Tests Administered by Test Fields.....	45
National Board-Certified Teachers Certification Earned in Illinois	46
Expenditures to National Board-Certified Teachers.....	47
Special Education Services	48
Students With Disabilities Receiving Special Education Services.....	48
Students With Disabilities by Gender.....	48
Students With Disabilities by Race/Ethnic Group	49
Students With Disabilities by Age	49
Students With Disabilities Exiting School.....	50
Students With Disabilities by Primary Language.....	50

Students With Disabilities Receiving Related and Other Special Education Services	51
Educational Placement of Children With Disabilities.....	52
Teachers Employed to Provide Special Education Services (FTE)	53
Paraprofessionals Employed to Provide Special Education Services (FTE).....	54
Special Education and Related Services Personnel (FTE).....	54
Mandated Categorical Grants Rate Analysis	55
Teachers' Retirement Systems	56

2018 Illinois Teacher of the Year



Lindsey Jensen, who teaches English in the 11th and 12th grades at Dwight Township High School in Dwight Public School District 230, is the 2018 Illinois Teacher of the Year. State Superintendent of Education Tony Smith, Ph.D., announced Jensen, one of 10 finalists, as this year's top educator during the 43rd annual Those Who Excel/Illinois Teacher of the Year banquet in Normal on Oct. 28, 2017.

Jensen represented Illinois in the National Teacher of the Year competition and represented Illinois teachers at a variety of events throughout 2018, including a trip to the White House. She also had numerous speaking engagements around the state.

Colleagues and students describe Jensen as infusing the best of research-based instructional practices with high expectations and infectious positivity. Jensen's many contributions to her school community include helping to redesign the English curriculum and organizing students and faculty in philanthropic efforts to raise thousands of dollars for the Special Olympics. She also supervises student teachers, coaches her colleagues, volunteers as an adviser for students' extracurricular clubs and activities, and serves her professional association.

Jensen's teaching career began 13 years ago as a teacher's aide in a junior high behavioral disorder classroom. Jensen, now in her 10th year as a high school English teacher, still calls upon her special education experience. She presents content in different ways – including through singing – and gives students the opportunity to show what they know in different formats.

Jensen received a Bachelor of Science in speech communication from Southern Illinois University and a Master of Arts in teaching in secondary education from Oakland City University. She is earning her doctorate in teaching and learning from Illinois State University.

Jensen joined nearly 1,000 educators from across the state at the 44th annual Those Who Excel/Illinois Teacher of the Year banquet on Oct. 20, 2018. She opened the evening by singing a song while playing her ukulele praising the work of her fellow teachers and encouraging them to continue to push forward when faced with adversity for the benefit of their students.

The State Superintendent named Susan Converse the 2019 Illinois Teacher of the Year. Converse teaches special education at Edwardsville High School in Edwardsville Community Unit School District 7.

2018 Condition of Education

Budget

The fiscal year 2019 state general funds budget appropriates more than \$168 million in additional funding for public education over the FY 2018 state general funds budget. The FY 2019 budget appropriates \$8.385 billion in state general funds and \$3.728 billion in other state and federal funds for a total public education budget of \$12.113 billion. State general fund appropriations for public education have increased \$1.4 billion since FY 2016.

FY 2019 marked the second year of implementation of the state's new funding formula, Evidenced-Base Funding (EBF). The enactment of EBF comprehensively changed the way that school districts receive the bulk of state funds. EBF sends more resources to Illinois' most under-resourced students. The formula calculates a unique Adequacy Target for each school district, based on 34 cost factors, such as technology, instructional coaches, counselors, and class sizes, that support student learning. The formula compares each district's current state and local resources to its Adequacy Target to produce a Percent of Adequacy that describes the districts' financial capacity to meet expectations.

The state distributed nearly \$700 million in new funding through the EBF formula in FY 2018 and FY 2019 primarily to school districts furthest away from their Adequacy Targets. However, eight out of every 10 students in Illinois still attend schools funded at less than 90 percent of adequacy.

Fiscal Year 2019 also marks the first year of implementation of the Property Tax Relief Grant, which provides school districts with the highest tax rates the opportunity to reduce property taxes through a \$50 million grant program.

EBF takes the necessary first steps toward ensuring all schools have the resources they need to provide a safe, rigorous, and well-rounded learning environment for all students. Public Act 100-0465 commits the state to full funding of the formula by June 30, 2027. ISBE along with the EBF Professional Review Panel continue to review and implement the state's historic funding reform and recommend recalibration and other modifications to EBF to meet the needs of all students in Illinois.

Student Demographics

The 2018 Illinois Report Card showed that Illinois' student population has become increasingly diverse. Students of color comprise a majority of Illinois' students (52 percent), while the

percentage of teachers who identify as white has held constant at approximately 83 percent. The percentage of students identified as English Learners also increased from 10.7 percent in the 2016-17 school year to 11.7 percent in the 2017-18 school year. Unfilled positions for bilingual educators comprise 12 percent of the total teacher shortage across the state. ISBE proposed legislative recommendations in October 2018 to expand, better support, and diversify the state's highly qualified teacher workforce.

Overall student enrollment in Illinois public schools continues to decline. Student enrollment has decreased by more than 58,000 students over the past 15 years, from 2,060,048 in the 2003-04 school year to 2,001,529 in the 2017-18 school year. Total enrollment in Illinois public schools decreased by 26,633 students over the past school year—the largest single-year decline in the past 15 years.

Approximately half of all public school students in Illinois qualify as low-income, comprising 49.4 percent of the total student population in the 2017-18 school year, compared to 39 percent 15 years ago. Students qualify as low-income if they are in families receiving public aid, live in temporary housing, or are eligible for free or reduced-price meals.

The average class size in 2016-17 remained constant at 20 students per class.

Learning Outcomes

ISBE stands committed to its strategic plan to improve student outcomes and strengthen communities by working toward common, measureable, and high-reaching goals for all students. ISBE focuses its efforts in five key areas:

- **Money:** Establish an adequate and equitable education finance system.
- **Quality:** Common definition of, and fair access to, quality education.
- **Autonomy:** Maximize district autonomy to provide quality education to all families.
- **Competency:** Encourage competency-based learning.
- **Community:** Districts and schools as centers of healthy communities.

The State Board of Education's long-term goals establish a common definition of quality education, stating that every child in each public school system in the State of Illinois deserves to attend a system wherein...

- All kindergartners are assessed for readiness.
- Ninety percent or more of third-grade students are reading at or above grade level.
- Ninety percent or more of fifth-grade students meet or exceed expectations in mathematics.

- Ninety percent or more of ninth-grade students are on track to graduate with their cohort.
- Ninety percent or more of students graduate from high school ready for college and career.
- All students are supported by highly prepared and effective teachers and school leaders.
- Every school offers a safe and healthy learning environment for all students.

The state's new support and accountability system for all schools launched with the 2018 Illinois Report Card on Oct. 30, 2018. As part of the new system, each school's Report Card now includes an annual designation—a descriptor of how well the school is meeting the needs of all students. The designation is based on 10 measures of performance, including student growth for elementary and middle schools. The designation provides transparency for families and communities and identifies the highest-need schools to receive additional supports through the IL-EMPOWER school improvement process.

The Exemplary designation identifies the highest-performing 10 percent of schools. The Lowest-Performing designation identifies the lowest-performing 5 percent of schools. Schools where most students are performing well but where one or more student groups is significantly underperforming receive the Underperforming designation. All other schools receive the Commendable designation. Approximately 70 percent of schools received the Commendable designation, and approximately 15 percent received the Underperforming designation on the 2018 Illinois Report Card.

Schools with the Underperforming or Lowest-Performing designation participate in the IL-EMPOWER improvement process, which begins with a school-led needs assessment to identify local priorities in the areas of Governance & Management, Curriculum & Instruction, and Climate & Culture. The process includes additional federal funding, ISBE school support managers, and the school's choice of vetted professional learning partners to work with on local improvement needs. IL-EMPOWER seeks to build the capacity of educators and educational leaders through partnerships, peer-to-peer learning, and meaningful professional development.

ISBE's competency-based learning pilot, efforts to strengthen and diversify the state's teacher workforce, and continued support of fair access to high-quality early learning opportunities indicate important strides toward meeting our ambitious goals for all students.

Student Performance and Achievement

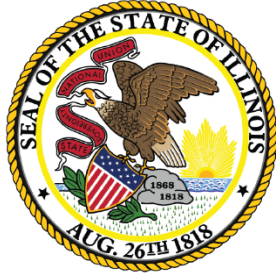
The 2018 state-level Illinois Report Card data show the highest percentage of students enrolling in college since Illinois began reporting the metric in 2014. The percentage of students enrolling in college 12 months after graduation increased to nearly three-quarters of all graduates (74.8 percent) – up from 68.7 percent just four years ago.

The data also show record numbers of students both taking and passing Advanced Placement exams. More than 2,000 additional students took more than 6,500 additional Advanced Placement exams in 2018 compared to in 2017, while maintaining Illinois' high pass rate at approximately 66 percent. From 2017 to 2018, enrollment in career and technical education increased by more than 6,000 students to 283,473. The percent of graduates needing to take remedial courses at Illinois community colleges continued to decline from 46.8 percent in 2017 to 45.7 percent in 2018.

Many other indicators of performance held steady, yet some showed small declines. Illinois still has significant work to do to fulfill its vision of whole, healthy children nested in whole, healthy systems supporting communities wherein all people are socially and economically secure.

Additional notable statewide data points are listed below. All comparisons show changes from the 2016-17 school year to the 2017-18 school year.

- The percentage of third- through eighth-grade students meeting or exceeding standards in English language arts on the PARCC assessment held steady at 37 percent in 2017 and 36.9 percent in 2018.
- The percentage of third- through eighth-grade students meeting or exceeding standards in math on the PARCC assessment held steady at 31.2 percent in 2017 and 31.3 percent in 2018.
- The percentage of 11th-grade students meeting or exceeding standards in English language arts on the SAT decreased from 39.8 percent to 36.9 percent.
- The percentage of 11th-grade students meeting or exceeding standards in math on the SAT decreased from 36.4 percent to 34.3 percent.
- The percentage of students meeting or exceeding standards in science on the Illinois Science Assessment held steady at 50.4 in 2017 and 50.5 in 2018.
- The four-year high school graduation rate decreased from 87 percent to 85.4 percent.
- The percentage of ninth-grade students on track to graduate decreased slightly from 87.1 to 86.8 percent.
- The percentage of eighth-grade students passing Algebra I increased from 29.5 percent to 30.6 percent.
- The rate of chronic truancy increased from 10.8 to 11.2 percent. Chronic truancy measures the percentage of students who miss 5 percent or more of school days per year without a valid excuse. ISBE began reporting chronic absenteeism, defined as the percent of students who miss 10 percent or more of the school year, on the 2018 Illinois Report Card. The rate of chronic absenteeism was 16.8 percent for the 2017-18 school year.
- The dropout rate remained constant at 2.1 percent.



Illinois State Board of Education

2018 Annual Report

Demographic, Financial, and Statistical Data

STATE, LOCAL AND FEDERAL RESOURCES

State, Local and Federal Resources For Elementary and Secondary Education (Dollars in Millions) (105 ILCS 5/2-3.11)

Year	State		Local		Federal		Total
	\$	%	\$	%	\$	%	
2017-18	12,509.9	36.7%	17,942.0	52.6%	3,654.6	10.7%	34,106.5
2016-17	11,670.4	35.6%	17,552.8	53.5%	3,602.6	11.0%	32,825.8
2015-16	10,881.5	34.8%	17,271.2	55.2%	3,149.1	10.1%	31,301.8
2014-15	10,438.6	34.6%	16,793.7	55.6%	2,976.5	9.9%	30,208.8
2013-14	10,305.2	34.5%	16,560.4	55.4%	3,007.4	10.1%	29,873.0
2012-13	9,411.6	33.1%	16,075.6	56.5%	2,976.7	10.5%	28,463.9
2011-12	9,315.8	32.4%	15,815.4	55.1%	3,580.8	12.5%	28,712.0
2010-11	7,568.2	28.0%	15,344.1	56.7%	4,127.2	15.3%	27,039.5
2009-10	8,613.0	31.6%	15,037.0	55.1%	3,637.4	13.3%	27,287.5
2008-09	9,105.7	34.5%	14,488.5	54.9%	2,773.7	10.5%	26,367.9
2007-08	8,519.6	34.6%	13,903.7	56.5%	2,165.7	8.8%	24,589.0
2006-07	7,492.1	33.1%	12,982.2	57.3%	2,174.1	9.6%	22,648.4
2005-06	6,903.1	32.4%	12,226.1	57.4%	2,163.1	10.2%	21,292.4
2004-05	6,922.0	33.6%	11,456.7	55.6%	2,219.3	10.8%	20,598.0
2003-04	7,223.2	35.9%	10,805.3	53.8%	2,073.8	10.3%	20,102.3
2002-03	6,812.8	35.9%	10,226.2	53.8%	1,952.1	10.3%	18,991.1
2001-02	6,296.1	35.7%	9,724.0	55.1%	1,623.0	9.2%	17,643.1
2000-01	6,441.0	37.3%	9,331.6	54.1%	1,482.0	8.6%	17,254.6
1999-00	5,932.0	36.7%	8,907.0	55.1%	1,328.1	8.2%	16,167.0
1998-99	5,420.9	35.7%	8,571.1	56.5%	1,177.6	7.8%	15,169.6
1997-98	4,836.1	34.5%	8,052.0	57.4%	1,134.2	8.1%	14,022.3

Notes:

- Fiscal years and school years start July 1 and end June 30. Tax years start January 1 and end December 31. The state and federal funds shown are based on fiscal years while local funds are based on tax (calendar) years. For example, the 2017-18 year includes actual state and federal appropriations for state fiscal year 2018 and local revenues accruing to school districts from the 2016 tax year. The 2016 property taxes are payable to the districts in calendar year 2017, usually after July 1.
- Local includes local original property tax revenues as estimated by the total property tax extension of districts and Corporate Personal Property Replacement Funds. Not included as local revenue are proceeds from investment income, income from school food services, and revenue generated through fees and assessments.
- State includes appropriated amount, including original appropriations, supplementals, and teachers' retirement contributions (does not include employer contributions).
- FY 2009 Federal sources include \$1.5 billion in federal funds received through the American Recovery and Reinvestment Act (ARRA).
- Restated FY 1998 through FY 2018 to reflect data from Illinois Office of the Comptroller.
- Amounts and percentages may not sum to totals based on rounding.

Elementary and Secondary School Income from Local Sources
(Dollars in Millions)
(105 ILCS 5/2-3.11)

Tax Year	Calendar Year Collected	Property Tax Revenues ^a	CPP Replacement Fund	Total Regular Revenues ^b
2016	2017	\$17,226.9 ^c	\$715.1 ^d	\$17,942.0
2015	2016	16,875.7 ^c	\$677.1 ^d	\$17,552.8
2014	2015	16,507.0	764.2	17,271.2
2013	2014	16,077.0	716.7	16,793.7
2012	2013	15,864.1	696.3	16,560.4
2011	2012	15,447.6	628.0	16,075.6
2010	2011	15,188.5	626.9	15,815.4
2009	2010	14,632.6	711.4	15,344.0
2008	2009	14,377.2	659.8	15,037.0
2007	2008	13,706.4	782.1	14,488.5
2006	2007	13,109.8	793.9	13,903.7
2005	2006	12,310.9	671.3	12,982.2
2004	2005	11,600.7	625.4	12,226.1
2003	2004	11,001.7	455.0	11,456.7
2002	2003	10,398.8	406.5	10,805.3
2001	2002	9,823.8	402.4	10,226.2
2000	2001	9,220.2	503.8	9,724.0
1999	2000	8,775.2	556.4	9,331.6
1998	1999	8,405.7	501.3	8,907.0
1997	1998	8,057.6	513.5	8,571.1
1996	1997	7,583.6	468.4	8,052.0

^a Revenues are derived by multiplying the total tax rate times the applicable equalized assessed value (EAV) property base for the tax year.

^b "Total Regular Revenues" is the sum of "Property Tax Revenues" and "CPP Replacement Fund" revenues.

^c Based on 2015 EAV amounts and 2015 total tax rates.

^d Revenue represents calendar year 2015 collections, distributed by the Illinois Department of Revenue in calendar year 2016.

**Net Lottery Proceeds
Compared to Total Appropriations to ISBE
(Dollars in Millions)
(105 ILCS 5/2-3.11)**

Fiscal Year	Total State Appropriations ^a	Net Lottery Proceeds ^b	
		Amount	% of Total
2018	\$12,509.9	\$718.8	5.7%
2017	\$11,670.4	\$720.3	6.2%
2016	\$10,881.5	\$676.9	6.2%
2015	\$10,438.6	\$678.6	6.5%
2014	\$10,305.2	\$655.6	6.4%
2013	\$9,411.6	\$655.6	7.0%
2012	\$9,315.8	\$639.9	6.9%
2011	\$7,568.2	\$631.8	8.3%
2010	\$8,613.0	\$625.0	7.3%
2009	\$9,105.7	\$625.0	6.9%
2008	\$8,519.6	\$657.0	7.7%
2007	\$7,492.1	\$622.4	8.3%
2006	\$6,903.1	\$670.5	9.7%
2005	\$6,922.0	\$614.0	8.9%
2004	\$7,223.2	\$570.1	7.9%
2003	\$6,812.8	\$540.0	7.9%
2002	\$6,296.1	\$555.0	8.8%
2001	\$6,441.0	\$490.0	7.6%
2000	\$5,932.0	\$515.0	8.7%
1999	\$5,420.9	\$540.0	10.0%
1998	\$4,836.1	\$565.0	11.7%

^a General Revenue Funds include retirement contributions and supplemental appropriations.

^b Net Lottery Proceeds stated above reflect transfers to the Common School Fund and are provided by the Commission on Government Forecasting and Accountability in the *Wagering in Illinois 2018 Update* and sourced from the Illinois Lottery.

Notes:

- Since FY 1985, Net Lottery Proceeds have been transferred to the Common School Fund.
- Starting March 1, 2010, annual transfers to the Common School Fund are equal to the amount transferred in FY 2009, adjusted for inflation. Any additional net revenue is deposited in the Capital Projects Fund.

State Revenues by Source
(Dollars in Millions)
(105 ILCS 5/2-3.11)

ALL FUNDS REVENUE BY SOURCE	FY 2018		FY 2019 (est.)	
Income Taxes (Gross)	\$23,395	30.4%	\$21,329	31.3%
Sales Taxes (Gross)	9,297	12.1%	8,894	13.1%
Federal Aid	20,940	27.2%	19,783	29.1%
Public Utility	1,409	1.8%	1,547	2.3%
State Lottery (Net)	1,510	2.0%	1,539	2.3%
All other Sources/Transfers	20,381	26.5%	14,946	22.0%
Total	76,932	100.0%	68,038	100.0%

Source: FY 2018 IOC Traditional Budgetary Report (does not include bond proceeds or State Employee Retirement System Fund).

Source: FY 2019 (est.) - Governor's Illinois State Budget Fiscal Year 2019 published February 14, 2018.

GENERAL REVENUE FUNDS BY SOURCE	FY 2018		FY 2019 (est.)	
Income Taxes (Gross)	23,391	51.4%	23,881	55.9%
Sales Taxes (Gross)	8,256	18.1%	8,679	20.3%
Federal Aid	5,238	11.5%	3,785	8.9%
Public Utility	896	2.0%	878	2.1%
State Lottery (Net)	719	1.6%	733	1.7%
All other Sources/Transfers	7,046	15.5%	4,780	11.2%
Total	45,546	100.0%	42,736	100.0%

Source: Commission on Government Forecasting & Accountability FY 2019 Budget Summary published August 1, 2018.

Amounts and percentages may not sum to totals based on rounding.

Income and Sales Taxes represent gross amounts and not reduced for distributions to other funds.

Appropriations by Major Purpose
(Dollars in Millions)
(105 ILCS 5/2-3.11)

ALL FUNDS BY SOURCE	FY18		FY19 (est.)	
Elementary & Secondary Education	\$22,878	14.0%	\$23,884	14.9%
Higher Education	2,530	1.5%	2,447	1.5%
Human Services	33,898	20.7%	35,209	22.0%
Public Safety	3,520	2.2%	3,141	2.0%
Environmental & Business Regulation	3,138	1.9%	3,762	2.4%
Economic Development & Infrastructure	19,692	12.0%	18,564	11.6%
Governmental Services & Elected Officials	77,882	47.6%	72,769	45.5%
Total	\$163,540	100.0%	159,776	100.0%

GENERAL REVENUE FUNDS BY SOURCE	FY18		FY19 (est.)	
Elementary & Secondary Education	\$12,438	40.5%	\$13,111	42.4%
Higher Education	1,733	5.6%	1,789	5.8%
Human Services	13,659	44.5%	13,698	44.3%
Public Safety	2,331	7.6%	1,841	5.9%
Environmental & Business Regulation	54	0.2%	51	0.2%
Economic Development & Infrastructure	146	0.5%	101	0.3%
Governmental Services & Elected Officials	358	1.2%	356	1.2%
Total	\$30,719	100.0%	\$30,947	100.0%

Source: Illinois Office of the Comptroller

Amounts and percentages may not sum to totals based on rounding.

Expenditures by Major Purpose
(Dollars in Millions)
(105 ILCS 5/2-3.11)

ALL FUNDS BY SOURCE	FY18		FY19 (est.)	
Elementary & Secondary Education	21,273	15.9%	23,884	14.9%
Higher Education	2,191	1.6%	2,447	1.5%
Human Services	29,421	22.0%	35,209	22.0%
Public Safety	2,852	2.1%	3,141	2.0%
Environmental & Business Regulation	1,513	1.1%	3,762	2.4%
Economic Development & Infrastructure	7,200	5.4%	18,564	11.6%
Governmental Services & Elected Officials	69,043	51.7%	72,769	45.5%
Total	133,493	100.0%	159,776	100.0%

GENERAL REVENUE FUNDS BY SOURCE	FY18		FY19 (est.)	
Elementary & Secondary Education	12,422	41.4%	13,111	42.4%
Higher Education	1,723	5.7%	1,789	5.8%
Human Services	13,041	43.5%	13,698	44.3%
Public Safety	2,296	7.7%	1,841	5.9%
Environmental & Business Regulation	52	0.2%	51	0.2%
Economic Development & Infrastructure	122	0.4%	101	0.3%
Governmental Services & Elected Officials	341	1.1%	356	1.2%
Total	29,997	100.0%	30,947	100.0%

Source: Illinois Office of the Comptroller

Amounts and percentages may not sum to totals based on rounding.

State Mandated Categorical Grant Programs
(Dollars in Thousands)
(105 ILCS 5/2-3.104)

Program Name	Appropriations							
	FY 2010	FY 2011	FY 2012	FY 2013	FY 2014	FY 2015	FY 2016	FY 2017
Sp Ed Personnel	459,600.0	457,352.0	452,257.2	440,200.0	439,061.8	430,588.8	440,114.6	442,400.0
Sp Ed Funding for Children	351,378.4	334,236.8	343,375.7	314,196.1	303,091.7	296,113.0	303,829.7	303,829.7
Sp Ed Private Tuition	181,100.0	183,223.1	177,743.7	206,843.3	218,947.7	225,013.1	233,000.0	233,000.0
Sp Ed Summer School	11,700.0	11,296.5	10,750.0	10,100.0	10,100.0	10,100.0	11,700.0	11,700.0
Sp Ed Transportation	429,700.0	422,189.0	432,525.6	440,500.0	440,500.0	440,363.8	452,785.4	450,500.0
Reg/Voc Transportation	351,100.0	213,049.1	223,976.1	205,808.9	206,947.1	201,178.2	205,808.9	205,808.9
Ill Free Lunch/Breakfast	26,300.0	26,300.0	26,300.0	14,300.0	14,300.0	9,000.0	9,000.0	9,000.0
Sp Ed Orphanage	120,200.0	120,200.0	101,700.0	111,000.0	105,000.0	92,862.5	95,000.0	103,472.5
Reg Ed Orphanage	13,000.0	13,000.0	13,000.0	13,000.0	12,000.0	11,730.0	11,500.0	21,500.0
Totals	1,944,078.4	1,780,846.5	1,781,628.3	1,755,948.3	1,749,948.3	1,716,949.4	1,762,738.6	1,781,211.1
Percentage Growth		-8.4%	0.04%	-1.44%	-0.34%	-1.89%	2.67%	1.05%

100% Claims including Chicago 299 (No Audit Adjustments): Reimbursement Programs

Appropriation Year	FY 2010	FY 2011	FY 2012	FY 2013	FY 2014	FY 2015	FY 2016	FY 2017
School Year	2008-09	2009-10	2010-11	2011-12	2012-13	2013-14	2014-15	2015-16
Sp Ed Personnel	454,401.2	458,457.8	452,235.8	440,282.4	441,525.2	439,932.1	442,512.2	443,361.7
Sp Ed Funding for Children	334,236.8	334,236.8	343,375.7	314,196.1	303,091.7	302,928.9	303,829.7	303,829.7
Sp Ed Private Tuition	182,134.0	183,012.2	191,096.1	216,782.0	226,181.2	231,983.4	240,693.8	238,404.1
Sp Ed Summer School	11,602.5	11,296.4	10,750.0	10,270.7	11,151.9	11,617.4	12,756.2	12,348.2
Sp Ed Transportation	416,376.4	425,813.4	433,370.0	440,149.6	449,057.4	454,828.6	464,444.6	480,617.0
Reg/Voc Transportation	340,240.5	336,893.9	332,409.7	320,773.0	329,858.8	340,649.5	351,110.9	343,981.0

Appropriation Year	FY 2010	FY 2011	FY 2012	FY 2013	FY 2014	FY 2015	FY 2016	FY 2017
Ill Free Lunch/Breakfast	29,013.1	29,968.5	36,136.8	38,000.9	39,432.9	42,744.4	41,734.8	41,396.5
Sp Ed Orphanage	106,373.5	109,169.8	101,591.4	103,488.0	99,706.6	96,128.6	96,075.6	93,163.1
Reg Ed Orphanage	11,557.1	11,802.8	12,087.2	11,575.3	11,166.4	14,133.5	14,551.9	12,401.8

Pro-Ration Reimburse %	FY 2010	FY 2011	FY 2012	FY 2013	FY 2014	FY 2015	FY 2016	FY 2017
Sp Ed Personnel	100%	100%	100%	100%	100%	98%	100%	100%
Sp Ed Funding for Children	100%	100%	100%	100%	100%	98%	100%	99%
Sp Ed Private Tuition	99%	100%	87%	91%	94%	94%	94%	96%
Sp Ed Summer School	100%	100%	100%	96%	81%	75%	84%	89%
Sp Ed Transportation	100%	100%	100%	99%	97%	95%	97%	92%
Reg/Voc Transportation	100%	74%	77%	76%	74%	71%	70%	71%
Ill Free Lunch/Breakfast	83%	78%	73%	38%	36%	21%	22%	22%
Sp Ed Orphanage	100%	100%	100%	100%	100%	100%	100%	100%
Reg Ed Orphanage	100%	100%	100%	100%	100%	100%	100%	100%

Notes:

- Current fiscal year appropriations pay previous year claims, except for IL Free Lunch/Breakfast, Orphanage, and Bilingual programs.
- Appropriation and claim amounts include amounts funded through the Chicago Block Grants.

Receipts and Expenditures for Illinois Public School Districts
(Dollars in Millions)
(105 ILCS 5/2-3.11)

	FY 2009	FY 2010	FY 2011	FY2012	FY 2013	FY 2014	FY 2015	FY 2016	FY 2017
Receipts									
Local Taxes/Payments									
in Lieu of Taxes	14,534.5	15,258.2	15,234.4	16,027.9	16,164.4	16,524.0	16,820.2	17,183.3	17,911.3
Other Local	1,390.3	1,322.6	1,331.7	1,249.1	1,240.8	1,188.1	1,232.4	1,306.7	1,411.6
General State Aid	3,527.5	381.7	4,484.8	4,308.8	4,246.4	4,391.1	4,376.0	4,639.2	4,988.9
Other State Funds	2,024.2	5,301.0	2,489.4	2,535.7	2,631.0	2,571.6	2,300.5	1,939.3	1,937.3
Federal Funds	<u>2,911.4</u>	<u>3,163.5</u>	<u>2,640.9</u>	<u>2,127.5</u>	<u>2,078.7</u>	<u>2,094.6</u>	<u>2,051.0</u>	<u>2,122.4</u>	<u>2,128.0</u>
	24,387.9	25,426.9	26,181.1	26,248.9	26,361.3	26,769.3	26,780.0	27,190.9	28,377.1
Expenditures									
Instruction	12,195.9	12,784.1	12,712.5	12,960.3	13,241.5	13,789.4	14,227.2	14,439.4	14,584.8
General Administration	849.4	863.7	859.8	893.1	887.1	904.8	908.7	904.7	914.1
Support Services	8,511.5	8,462.9	8,086.5	8,067.7	8,223.8	8,496.5	8,446.7	8,458.9	8,593.9
Community Services	134.4	190.3	123.5	121.4	129.7	136.9	143.2	142.3	142.8
Payments to Other									
Gov't. Units (In state, out of state)	676.9	737.7	706.8	732.0	728.7	725.4	709.4	725.3	706.9
Debt Service Retired	1,081.5	1,134.6	1,116.9	1,153.8	1,226.7	1,355.0	1,415.9	1,458.6	1,883.0
Debt Services (Interest)	798.0	817.7	856.0	907.2	921.9	917.4	930.9	971.8	998.3
Capital Outlay/Non- Capitalized Equip.	<u>2,198.9</u>	<u>1,903.9</u>	<u>1,856.7</u>	<u>1,988.1</u>	<u>1,932.1</u>	<u>1,974.6</u>	<u>2,012.0</u>	<u>1,987.5</u>	<u>1,870.8</u>
	26,446.4	26,894.9	26,318.5	26,823.6	27,291.6	28,300.0	28,794.0	29,088.4	29,694.6

Data Source: School District Annual Financial Report, Financial Data Table

Public Schools Finance Statistics
(105 ILCS 5/2-3.11)

	District Type	Per Capita Tuition Charge	Operating Expense per Pupil
FY 2017	Elementary	\$11,655	\$12,859
	Secondary	16,463	17,519
	Unit	10,784	12,720
	ALL DISTRICTS	11,701	13,337
	Chicago SD 299	12,255	15,412
FY 2016	Elementary	\$11,236	\$12,504
	Secondary	15,912	17,044
	Unit	10,620	12,374
	ALL DISTRICTS	11,422	12,973
	Chicago SD 299	12,544	14,973
FY 2015	Elementary	\$10,925	\$12,173
	Secondary	15,398	16,494
	Unit	10,382	12,354
	ALL DISTRICTS	11,133	12,808
	Chicago SD 299	12,229	15,310
FY 2014	Elementary	\$10,450	\$11,846
	Secondary	14,900	16,165
	Unit	9,947	12,096
	ALL DISTRICTS	10,677	12,521
	Chicago SD 299	11,707	15,120
FY 2013	Elementary	\$10,161	\$11,594
	Secondary	14,259	15,621
	Unit	9,363	11,532
	ALL DISTRICTS	10,167	12,045
	Chicago SD 299	10,412	13,791

District types:

- Elementary School Districts: PreK-8
- Secondary (High) School Districts: 9-12
- Unit School Districts: PreK-12

Data Source: School Business Services OEPP/PCTC/ADA State Totals Historical File

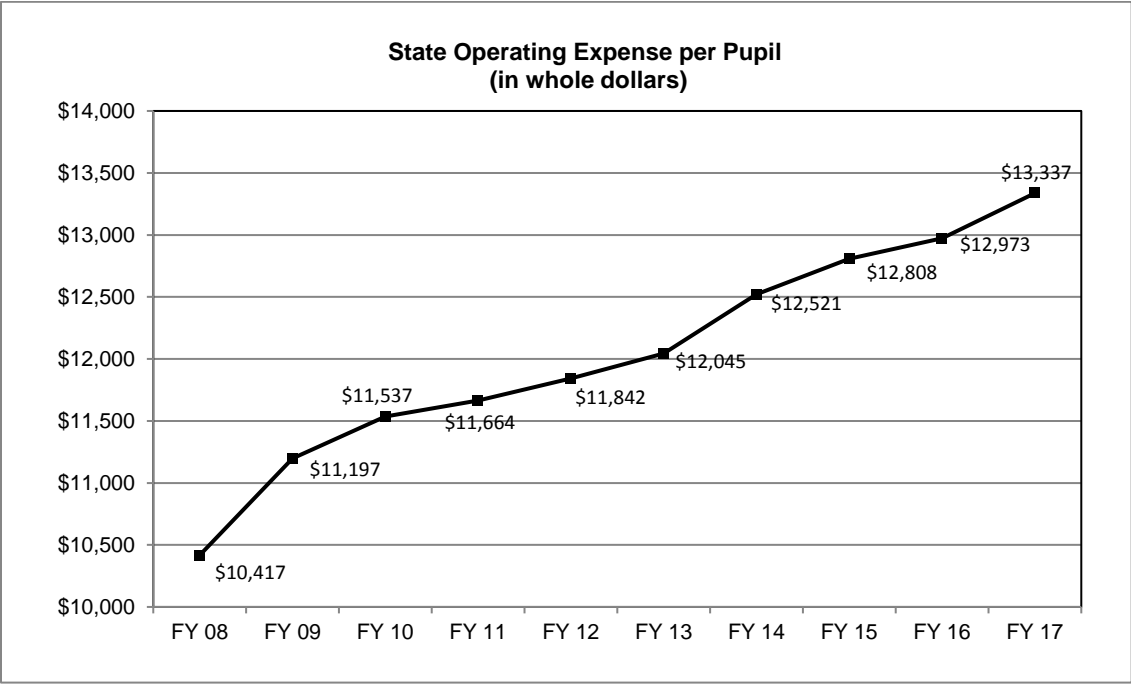
Total Appropriations per Pupil Enrolled
(105 ILCS 5/2-3.11)

Fiscal Year	Total Appropriations^a	Fall Enrollment^b	Total Appropriations Per Pupil Enrolled^c	% Change in Dollars Per Pupil Enrolled
2018	\$34,106.5	2,005,153	\$17,009	5.1%
2017	32,825.8	2,028,162	16,179	5.6
2016	31,301.8	2,041,779	15,325	4.8
2015	30,208.8	2,057,858	14,630	1.6
2014	29,873.0	2,073,480	14,401	4.0
2013	28,463.9	2,054,155	13,851	0.7
2012	28,712.0	2,087,628	13,748	1.5
2011	27,039.5	2,074,806	13,539	-0.2
2010	27,287.5	2,105,779	13,568	9.0
2009	26,367.9	2,112,132	12,449	7.0
2008	24,589.0	2,113,435	11,635	8.8
2007	22,648.4	2,118,692	10,690	6.2
2006	21,292.4	2,111,706	10,070	2.4
2005	20,598.0	2,097,503	9,836	2.9
2004	20,102.3	2,100,961	9,560	4.6
2003	18,991.1	2,084,187	9,141	2.2
2002	17,643.1	2,071,391	8,945	2.0
2001	17,254.6	2,051,021	8,769	5.2
2000	16,167.0	2,018,316	8,337	7.1
1999	15,169.6	2,011,814	7,784	8.5
1998	14,022.3	1,996,184	7,173	7.6

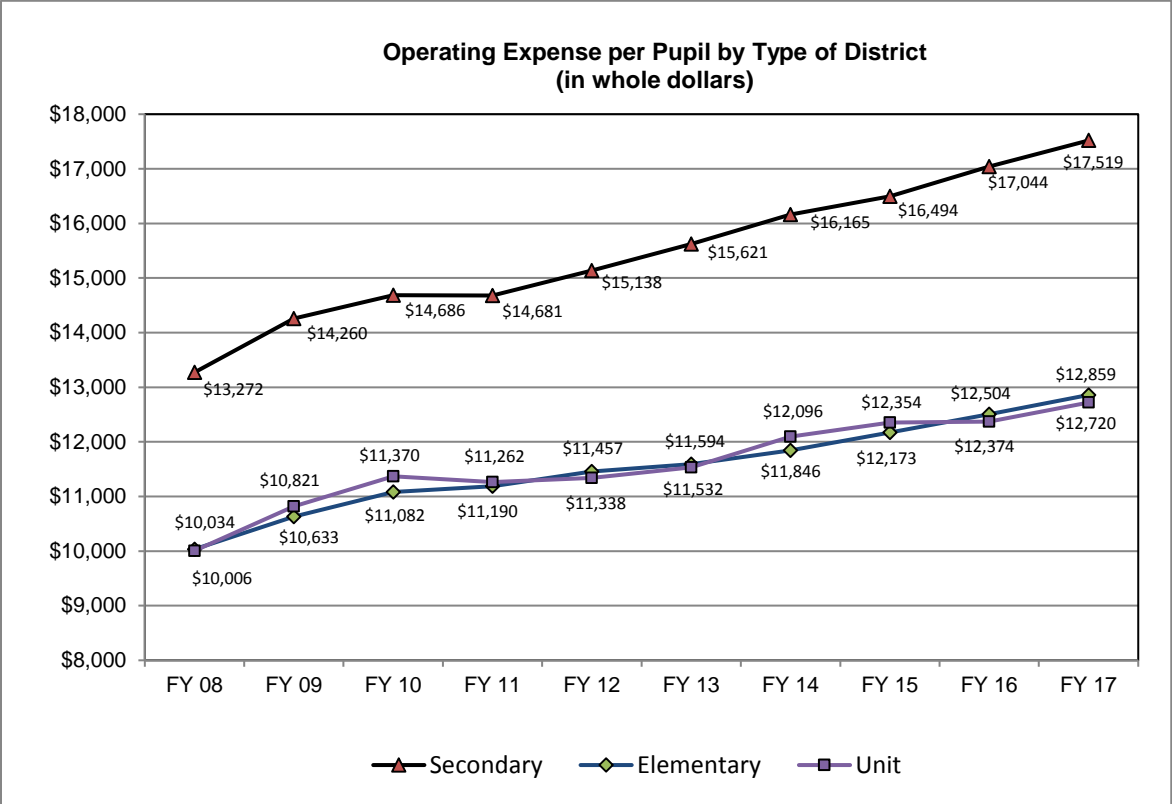
^a In millions; includes state, federal, and local funds and pensions.

^b Prior to FY 2018, Fall Enrollment was a snapshot of student enrollment taken from the Student Information System as of September 30. Starting in FY 2018, Fall Enrollment was a snapshot of student enrollment taken from the Student Information System as of October 1.

^c In whole dollars.

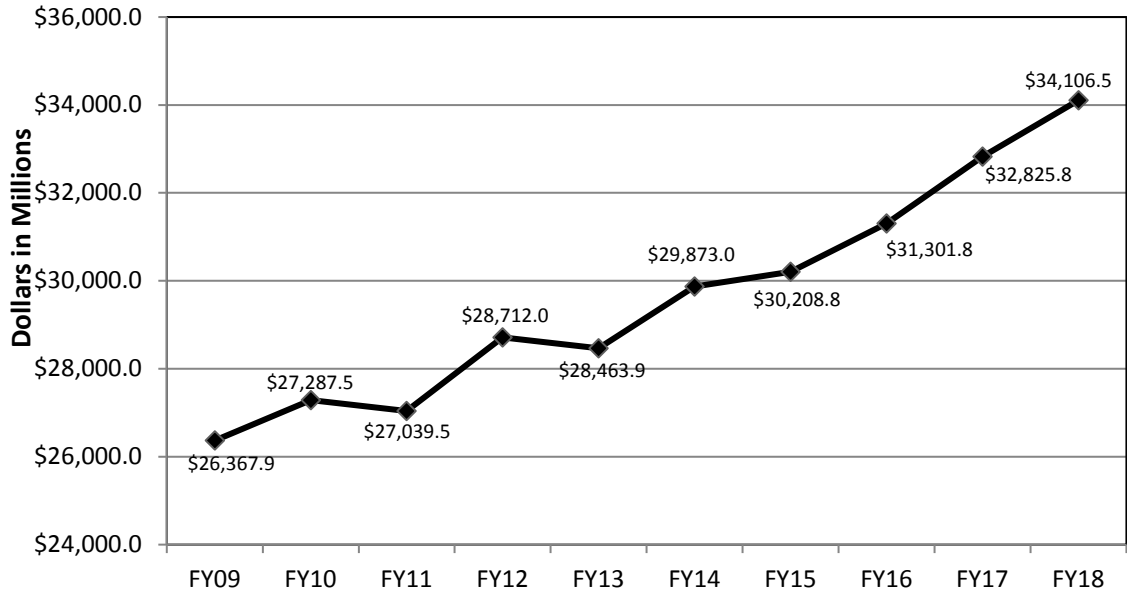


Data Source: School Business Services OEPP/PCTC/ADA State Totals Historical File

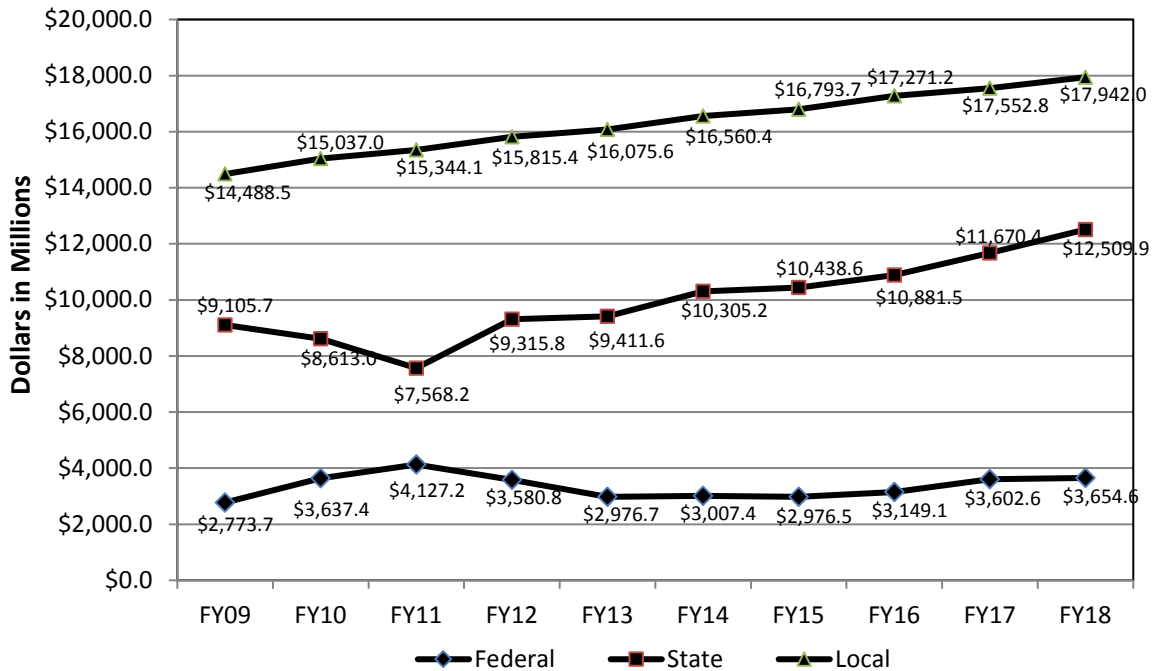


Data Source: School Business Services OEPP/PCTC/ADA State Totals Historical File

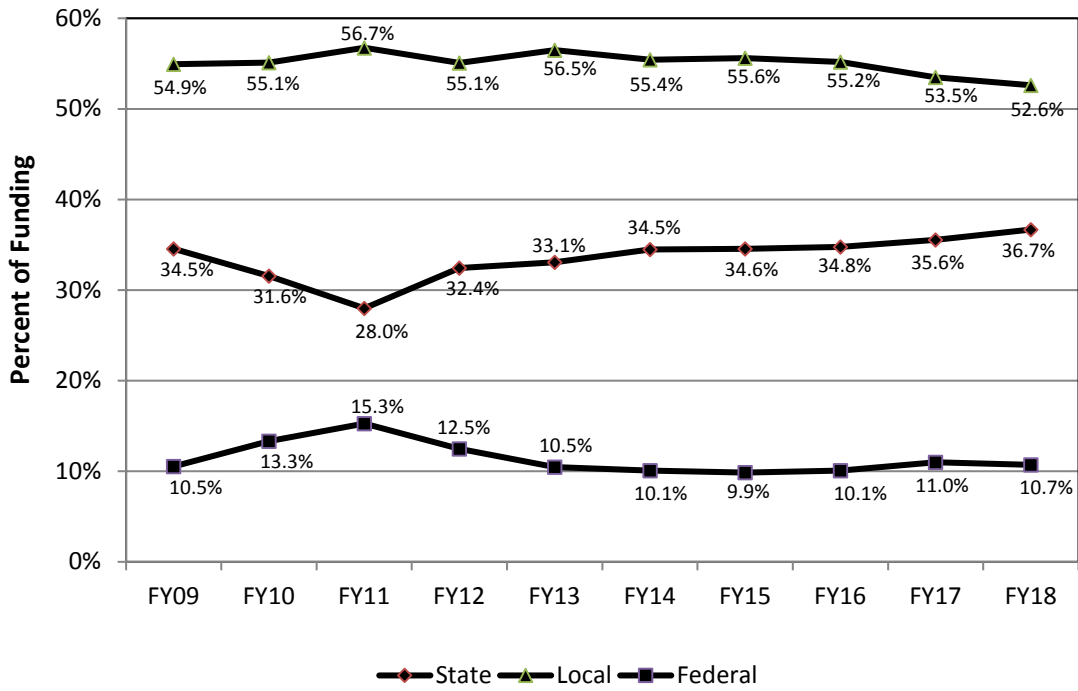
Total Funding Elementary and Secondary Education



State, Local and Federal Funding Elementary and Secondary Education



Percentages of State, Local and Federal Funding



SCHOOLS AND DISTRICTS

A Profile of Illinois Public Schools in 2017-18 Selections from School Report Card Files (regular public schools only)

SUMMARY

852 districts	85.4% graduation rate
3,888 schools	2.1% dropout rate
2,001,529 students	6.9% mobility rate
49.4% low-income enrollment	11.7% EL enrollment

TRENDS

Number of school districts 852. The number of operating school districts with enrollment declined from 870 in 2008 to 852 in 2018; there were 368 elementary districts, 96 high school districts, and 388 unit districts.

Decrease in the number of public schools. The number of public schools was 3,888 in 2018, but 4,380 in 2008. These figures include charter schools and regular public schools that issue school report cards.

Decrease in the average school size. The average school size has decreased from 533 in 2008 to 515 in 2018.

Student enrollment decreased. Student enrollment in regular Illinois public schools decreased from 2,074,167 in 2008 to 2,001,529 in 2018, according to the Illinois Interactive Report Card (IIRC). This count differs from enrollment in the Fall Housing counts. Calculations involving enrollment will either be based on Fall Housing from ISBE's Student Information System (SIS) or IIRC data, which will be noted. Student enrollment has been based on the serving school since 2017, and home school prior to that year.

Low-income enrollment increased. Low-income students increased from 41.1 percent of the enrollment in 2008 to 49.4 percent in 2018. Pupils are considered low-income if they are from families receiving public aid, are living in institutions for neglected or delinquent children, are being supported in foster homes with public funds, or are eligible for free or reduced-price lunches.

Mobility rate decreased. The mobility rate decreased from 14.9 percent in 2008 to 6.9 percent in 2018. The mobility rate is the sum of the students transferred out and students transferred in, divided by the average daily enrollment, multiplied by 100. A student may be counted at multiple schools, but only once at any one school, depending on the number of transfers the student makes in the year.

The mobility rate calculation was changed in school year (SY) 2017. To provide comparable trend data, ISBE recalculated mobility back to SY 2012. Previous versions of this report and the Report Cards prior to SY 2017 show a higher incident rate that was roughly double the mobility rate.

Percentage of non-white students exceeded 50 percent. Students who are Black, Hispanic, Asian, American Indian or Alaskan Native, Hawaiian or Other Pacific Islander, or Two or More Races made up 52 percent of the enrollment in 2018, up from 46 percent in 2008. The increase is mainly among Hispanic, Asian, and Two or More Races students.

English learners increased in the last decade. The percentage of English learners (EL) increased from 7.5 percent in 2008 to 11.7 percent in 2018. EL students include those who are eligible for bilingual education.

Dropout rate decreased. The dropout rate declined from 4.1 percent in 2008 to 2.1 percent in 2018. Dropouts include students in grades 9-12 whose names have been removed from the district roster for any reason other than death, extended illness, graduation/completion of a program of studies, transfer to another school, or expulsion.

Increase in chronic truancy rate. The chronic truancy rate was 11.2 percent in 2018, compared to 8.6 percent reported for 2012, when this rate was first measured using the current calculation. Chronic truants include students subject to compulsory attendance who have been absent without valid cause for 5 percent (nine or more) of the past 180 school days. The definition of chronic truants was changed in 2011. Prior to 2011, chronic truants were defined as missing 10 percent of the previous 180 days.

Average class size decreased at most levels. Between 2008 and 2018, the average class size for the selected grades experienced the following changes:

- Kindergarten --- from 20.5 to 19.0
- Grade 1 --- from 21.0 to 19.0
- Grade 3 --- from 21.7 to 20.0
- Grade 6 --- from 22.2 to 21.0
- Grade 8 --- from 21.5 to 20.0
- High School (grades 9-12) --- from 19.6 to 20.0

Percentage of non-white teachers increased in the last decade. Non-white accounted for 15.1 percent of the classroom teachers in 2008 compared to 16.8 percent in 2018. Non-white teachers include those who are Black, Hispanic, Asian, American Indian or Alaskan Native, Hawaiian or Other Pacific Islander, Two or More Races, or unknown.

Slight increase in the percentage of male classroom teachers. There is an upward trend in the percentage of male teachers, increasing from 22.9 percent of the teaching force in 2008 to 23.3 percent in 2018.

Percentage of teachers with graduate degrees increased. In 2018, teachers who had a master's degree or higher accounted for 61 percent of the classroom teachers in Illinois public schools, up from 53.2 percent in 2008.

Pupil-teacher ratio decreased at the secondary level. Between 2008 and 2018, the elementary pupil-teacher ratio increased from 18.3:1 to 20.1:1, while the secondary pupil-teacher ratio decreased to 20.0:1 from 18.0:1.

Graduation rate decreased. The four-year graduation rate in 2018 was 85.4 percent, decreasing from 86.5 percent in 2008.

Illinois Public School Districts by Type
(105 ILCS 5/2-3.11)

School Year	Elementary Districts	Secondary Districts	Unit Districts	Total Districts^a
2017-18	368	96	388	852
2016-17	368	96	388	852
2015-16	369	98	386	853
2014-15	373	99	385	857
2013-14	374	100	386	860
2012-13	375	100	387	862
2011-12	377	100	388	865
2010-11	378	101	388	867
2009-10	378	101	389	868
2008-09	378	101	390	869
2007-08	378	102	390	870
2006-07	376	102	395	873
2005-06	377	102	395	874
2004-05	379	103	399	882
2003-04	381	103	404	888
2002-03	383	103	407	893
2001-02	383	103	407	893
2000-01	383	103	408	894
1999-00	384	103	409	896
1998-99	385	104	408	897
1997-98	388	106	406	900

^a Does not include five state-operated school systems: the two state laboratory schools, the Illinois Mathematics and Science Academy, and the Illinois Department of Human Services, Division of Rehabilitation Services state schools.

Data Sources: Fall Housing Enrollment, Entity Profile System, and CDS File Record Counts

**Comparison of Public School Districts by Type and Enrollment
2007-08 and 2017-18
(105 ILCS 5/2-3.11)**

District Enrollment	Elementary Districts		Secondary Districts		Unit Districts		Total Districts*	
	07-08	17-18	07-08	17-18	07-08	17-18	07-08	17-18
25,000 or more	0	0	0	0	5	5	5	5
10,000 to 24,999	4	4	2	2	12	13	18	19
5,000 to 9,999	10	10	13	9	24	24	47	43
2,500 to 4,999	56	49	22	27	34	29	112	105
1,000 to 2,499	94	100	28	21	117	104	239	225
600 to 999	57	53	14	17	85	79	156	149
300 to 599	59	55	12	15	92	104	163	174
Fewer than 300	99	97	9	5	21	30	129	132
Total	379	368	100	96	390	388	869	852

* Does not include special education districts and state-authorized charter schools.

Data Sources: Fall Housing Enrollment, Entity Profile System, and CDS File Record Counts

**Comparison of Public and Nonpublic Attendance Centers
2007-08 and 2017-18
(105 ILCS 5/2-3.11)**

Public Attendance Centers				Nonpublic Attendance Centers				
	07-08	17-18		07-08	17-18		07-08	17-18
Elementary	2,629	2,466	Elementary*	916	688			
Junior High	616	610	Secondary	129	113			
Secondary	673	713	Unit	139	93			
Special Education and Others	462	446	Special Education	55	11			
Total	4,380	4,235	Total	1,239	905			

* Includes Junior High.

Note: These counts include all attendance centers, not just the regular schools included in the Illinois Interactive Report Card.

Data Sources: Fall Housing Enrollment, Entity Profile System, and CDS File Record Counts

Public School Recognition Committee
Act or Omissions Status Report for the 2017-18 School Year
(105 ILCS 5/1A-4)

Region	Facility	Final FY Assignment	Date of District Notification
13-Clinton/Jefferson/Marion/Washington	North Wamac SD 186	Recognized Pending Further Review	November 19, 2018, via US Mail, certified, return receipt
13-Clinton/Jefferson/Marion/Washington	Grand Prairie CCSD 6	Recognized Pending Further Review	November 19, 2018, via US Mail, certified, return receipt
28-Bureau/Henry/Stark	Dalzell SD 98	Recognized Pending Further Review	November 19, 2018, via US Mail, certified, return receipt
28-Bureau/Henry/Stark	Spring Valley CCSD 99	Recognized Pending Further Review	November 19, 2018, via US Mail, certified, return receipt
28-Bureau/Henry/Stark	Princeton ESD 115	Recognized Pending Further Review	November 19, 2018, via US Mail, certified, return receipt
28-Bureau/Henry/Stark	Princeton HSD 500	Recognized Pending Further Review	November 19, 2018, via US Mail, certified, return receipt
28-Bureau/Henry/Stark	AlWood CUSD 225	Recognized Pending Further Review	November 19, 2018, via US Mail, certified, return receipt
34-Lake	Winthrop Harbor SD 1	Recognized Pending Further Review	November 19, 2018, via US Mail, certified, return receipt
34-Lake	Zion ESD 6	Recognized Pending Further Review	November 19, 2018, via US Mail, certified, return receipt
50-Saint Clair	Brooklyn UD 188	Recognized Pending Further Review	November 19, 2018, via US Mail, certified, return receipt
50-Saint Clair	East St Louis SD 189	Recognized Pending Further Review	November 19, 2018, via US Mail, certified, return receipt

STUDENTS

Public and Nonpublic Prekindergarten through Postgraduate Fall Pupil Enrollment (105 ILCS 5/2-3.11)

School Year	Public	Nonpublic	Total
2017-18	2,005,153	203,864	2,209,017
2016-17	2,028,162	205,263	2,233,425
2015-16	2,041,779	214,631	2,256,410
2014-15	2,057,858	220,144	2,278,002
2013-14	2,073,480	219,700	2,293,180
2012-13	2,054,155	222,122	2,276,277
2011-12	2,087,628	237,377	2,325,005
2010-11	2,074,806	241,323	2,316,129
2009-10	2,105,779	243,680	2,349,459
2008-09	2,112,132	249,373	2,361,505
2007-08	2,113,435	265,276	2,378,711
2006-07	2,118,692	244,188	2,362,880
2005-06	2,111,706	267,651	2,379,357
2004-05	2,097,503	225,765	2,323,268
2003-04	2,100,961	312,891	2,413,852
2002-03	2,084,187	306,047	2,390,234
2001-02	2,071,391	317,198	2,388,589
2000-01	2,051,021	323,231	2,374,252
1999-00	2,018,316	323,869	2,342,185
1998-99	2,011,814	322,664	2,334,478
1997-98	1,996,184	321,406	2,317,590

Notes:

- Fall Housing Enrollment is a snapshot of student enrollment as of October 1. Prior to FY 2016, Fall Enrollment was a snapshot of student enrollment as of September 30. Beginning in FY 2016, Fall Enrollment is the State Report Card total and verified by districts.
- Nonpublic schools report data voluntarily on an annual basis.

Data Sources: Student Information System and Entity Profile System

Comparison of Public School Enrollment
2007-08 and 2017-18
(105 ILCS 5/2-3.11)

Grade Level	2007-08	2017-18	Percent Change
Pre-K (not Bilingual, Special Ed.)	54,700	47,822	-12.6
Pre-K Bilingual	2,094	13,267	533.6
Pre-K Special Ed.	21,049	22,575	7.2
Kindergarten	145,737	132,075	-9.4
1 st Grade	154,713	137,580	-11.1
2 nd Grade	154,451	139,991	-9.4
3 rd Grade	155,578	145,553	-6.4
4 th Grade	152,886	148,792	-2.7
5 th Grade	153,352	151,331	-1.3
6 th Grade	156,877	149,568	-4.7
7 th Grade	160,014	149,227	-6.7
8 th Grade	<u>161,288</u>	<u>151,180</u>	<u>-6.3</u>
Elementary Total	1,472,739	1,388,961	-5.7
9 th Grade	178,385	159,550	-10.6
10 th Grade	167,459	155,612	-7.1
11 th Grade	149,710	150,969	0.8
12 th Grade	144,342	150,045	4.0
Secondary Total	640,526	616,176	-3.8
Ungraded	0	16	
Total Elementary & Secondary	2,113,265	2,005,153	-5.1

Notes:

- Public school enrollment includes Regional Offices of Education, Department of Juvenile Justice, special education, and regular education schools.
- Prior to FY 2016, Fall Enrollment was a snapshot of student enrollment taken from the Student Information System as of September 30. Beginning in FY 2016, Fall Enrollment is the State Report Card total and verified by districts.
- 2016 includes students in other sites.

Data Source: Student Information System

**Comparison of Public School Enrollment
By Racial/Ethnic Distribution
2007-08 and 2017-18**

Race	2007-08		2017-18	
	Number	%	Number	%
White Non-Hispanic	1,137,892	53.8	962,350	48.0
Black Non-Hispanic	409,786	19.4	337,776	16.8
Hispanic	420,024	19.9	524,950	26.2
Asian	82,657	3.9	101,676	5.1
American Indian or Alaskan Native	4,746	0.2	5,601	0.3
Hawaiian or Other Pacific Islander	n/a	0.0	2,095	0.1
Two or More Races	58,160	2.8	70,705	3.5
Total Students	2,113,265	100.0	2,005,153	100.0
Total Minority Students	975,373	46.2	1,042,803	52.0

Data Source: Fall Housing Report (Student Information System).

**Comparison of Nonpublic School Enrollment
2007-08 and 2017-18
(105 ILCS 5/2-3.11)**

Grade Level	2007-08	2017-18	Percent Change
Pre-K	33,115	27,726	-16.3%
Kindergarten	21,699	15,058	-30.6%
1 st Grade	19,184	13,299	-30.7%
2 nd Grade	18,552	13,194	-28.9%
3 rd Grade	18,212	13,497	-25.9%
4 th Grade	17,933	13,330	-25.7%
5 th Grade	17,915	13,730	-23.4%
6 th Grade	17,578	13,303	-24.3%
7 th Grade	17,769	13,511	-24.0%
8 th Grade	17,638	13,504	-23.4%
Ungraded Elementary	1,035	159	-84.6%
Elementary Special Ed. (PK-8)	<u>3,853</u>	<u>2,639</u>	<u>-31.5%</u>
Elementary Total	204,483	152,950	-25.2%
9 th Grade	15,492	12,724	-17.9%
10 th Grade	14,983	12,190	-18.6%
11 th Grade	14,284	12,080	-15.4%
12 th Grade	13,968	12,243	-12.4%
Ungraded Secondary	376	506	+34.6%
Secondary Special Ed. (9-12)	<u>3,485</u>	<u>1,171</u>	<u>-66.4%</u>
Secondary Total	62,588	50,914	-18.7%
Total Elementary & Secondary	267,071	203,864	-23.7%

Note: Nonpublic schools report data voluntarily on an annual basis

**English Learner Enrollment by Native Language
2017-18**

Native Language	Chicago SD 299 Number	Non-Chicago Number	Statewide Total Number
Spanish	55,143	112,440	167,583
Arabic	1,565	6,588	8,153
Polish	817	5,516	6,333
Urdu	886	2,576	3,462
Pilipino (Tagalog)	408	1,668	2,076
Gujarati	237	1,683	1,920
Russian	160	1,637	1,797
Mandarin (Chinese)	524	1,231	1,755
French	279	1,220	1,499
Vietnamese	401	981	1,382
Telugu (Telegu)	80	1,229	1,309
Cantonese (Chinese)	901	315	1,216
Hindi	135	1,069	1,204
Ukrainian	382	728	1,110
Korean	48	981	1,029
Other (identified)	240	711	951
Assyrian (Syriac/Aramaic)	184	626	810
Yoruba	418	359	777
Tamil	45	702	747
Japanese	51	678	729
Other	<u>3,851</u>	<u>14,813</u>	<u>18,664</u>
	66,755	157,751	224,506

Data Source: Student Information System

**English Learners by English Language Proficiency Status
and School Year Outcome 2017-18**
(105 ILCS 5/1A-4)

English Language Proficiency Status	Chicago SD 299	Non-Chicago
	Number	Number
Attained ^a	4,660	14,087
Not Attained	62,095	143,664
School Year Outcome		
Promoted to next grade or otherwise retained	57,503	133,691
Withdrawn from EL classes by parents	16	1,184
Transferred ^b	2,620	5,539
Graduated	1,458	2,643
Dropped out ^c	488	561
Other outcome ^d	<u>10</u>	<u>46</u>
Total Students	66,755	157,751

Notes: ^a English Learners who attained English language proficiency as defined by the state (a 4.8 Overall Composite Proficiency Level on the ACCESS for ELLs measure) in 2017-18. English Learners who did not attain English language proficiency were promoted to the next grade, retained in the same grade, graduated, transferred, dropped out, services were interrupted by parent withdrawal, or other issues.

^b Transferred includes students transferred to another district, home schooled, private schooled, or moved to unknown.

^c Dropped out includes students who dropped out or transferred to a GED program.

^d Other outcomes include death, age out, and the certificate of completion.

Data Source: Student Information System

**School Districts That Served More Than 1,000 English Learners
2017-18**

School District Name	EL Enrollment	%of Statewide EL Enrollment
City of Chicago SD 299	66,755	29.7%
SD U-46	11,757	5.2%
Cicero SD 99	6,108	2.7%
Waukegan CUSD 60	5,429	2.4%
Aurora East USD 131	5,274	2.3%
Rockford SD 205	4,245	1.9%
CUSD 300	3,255	1.4%
Palatine CCSD 15	3,197	1.4%
Schaumburg CCSD 54	2,985	1.3%
Joliet PSD 86	2,787	1.2%
Wheeling CCSD 21	2,675	1.2%
Aurora West USD 129	2,632	1.2%
Valley View CUSD 365U	2,620	1.2%
Indian Prairie CUSD 204	2,557	1.1%
Comm Cons SD 59	2,506	1.1%
West Chicago ESD 33	2,165	1.0%
Round Lake CUSD 116	2,015	0.9%
Plainfield SD 202	1,949	0.9%
Addison SD 4	1,440	0.6%
CCSD 62	1,420	0.6%
J S Morton HSD 201	1,411	0.6%
Maywood-Melrose Park-Broadview 89	1,404	0.6%
CUSD 200	1,310	0.6%
East Maine SD 63	1,236	0.6%
Burbank SD 111	1,225	0.5%
Belvidere CUSD 100	1,171	0.5%
CUSD 308	1,136	0.5%
Champaign CUSD 4	1,130	0.5%
North Palos SD 117	1,085	0.5%
Woodland CCSD 50	1,081	0.5%
Naperville CUSD 203	1,054	0.5%

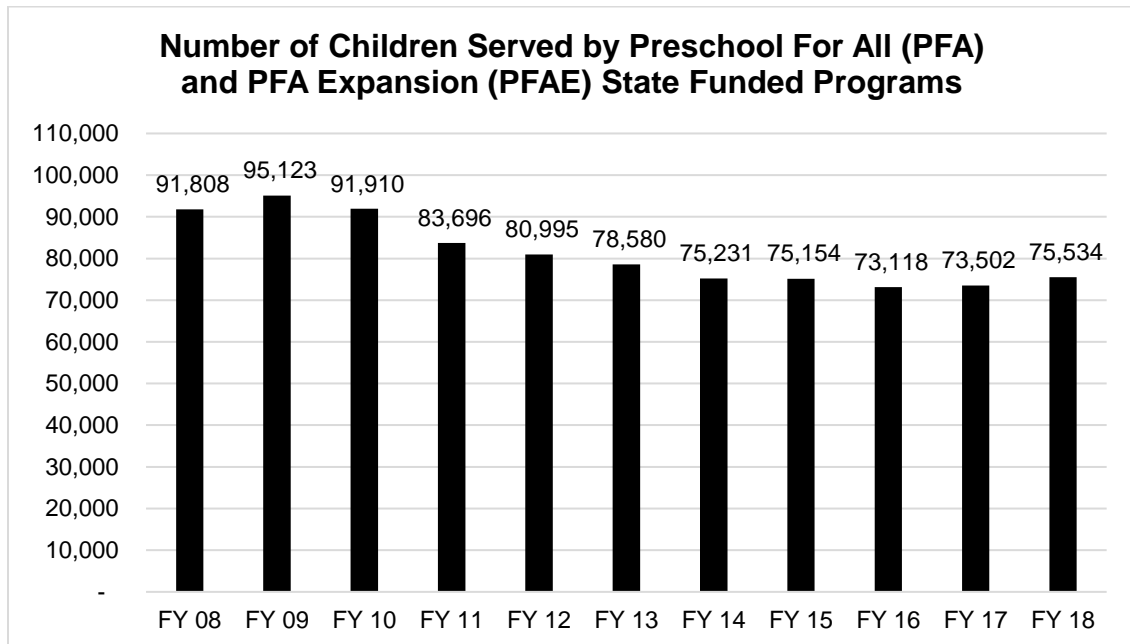
Data Source: Student Information System

English Learner Enrollment

	2013-14	2014-15	2015-16	2016-17	2017-18
Chicago District 299	60,154	63,451	62,583	62,300	66,755
Non-Chicago Districts	<u>126,492</u>	<u>137,841</u>	<u>139,391</u>	<u>143,285</u>	<u>157,751</u>
Total Enrollment	186,646	201,292	201,974	205,585	224,506

Note: Enrollment counts were revised to reflect a change in data reporting beginning in 2013-14.

Data Source: Student Information System



Note: PFAE came into effect in FY 2017. In the chart, FY17 and FY18 show combined PFA and PFAE counts.

Data Sources: Student Information System, Early Childhood Electronic Grant Management System

High School Graduates
(105 ILCS 5/2-3.11)

School Year	Public	Nonpublic	Total
2017-18	139,666	13,343	153,009
2016-17	139,133	14,082	153,215
2015-16	137,296	12,541	149,837
2014-15	137,290	15,633	152,923
2013-14	139,056	15,598	154,654
2012-13	139,187	14,230	153,417
2011-12	134,260	17,514	151,774
2010-11	132,648	17,038	149,686
2009-10	139,870	17,038	156,908
2008-09	132,123	15,970	148,093

Note: Nonpublic schools report data voluntarily on an annual basis.

Data Sources: Student Information System; Nonpublic Registration, Enrollment and Staff Report

**2017-18 High School Dropout Rate by Grade Level, Gender, and Race/Ethnicity
(105 ILCS 5/1A-4)**

	9th Grade		10th Grade		11th Grade		12th Grade		Total		All
	Male	Female	Male	Female	Male	Female	Male	Female	Male	Female	
White											
# of Dropouts	238	152	388	246	700	476	954	525	2280	1399	3,679
Statewide Enrollment	40037	37258	39160	37011	38720	37070	40634	37290	158551	148629	307,180
DROPOUT RATE	0.59%	0.41%	0.99%	0.66%	1.81%	1.28%	2.35%	1.41%	1.44%	0.94%	1.20%
Black-African American											
# of Dropouts	416	278	775	627	636	547	529	372	2356	1824	4,180
Statewide Enrollment	13758	13131	13546	13056	12285	12401	12069	12326	51658	50914	102,572
DROPOUT RATE	3.02%	2.12%	5.72%	4.80%	5.18%	4.41%	4.38%	3.02%	4.56%	3.58%	4.08%
Am Indian-Alaskan											
# of Dropouts	3	3	7	6	9	3	9	8	28	20	48
Statewide Enrollment	264	209	209	211	186	191	175	207	834	818	1,652
DROPOUT RATE	1.14%	1.44%	3.35%	2.84%	4.84%	1.57%	5.14%	3.86%	3.36%	2.44%	2.91%
Asian											
# of Dropouts	9	6	25	13	21	16	37	18	92	53	145
Statewide Enrollment	3874	3842	3866	3632	3824	3757	3917	3759	15481	14990	30,471
DROPOUT RATE	0.23%	0.16%	0.65%	0.36%	0.55%	0.43%	0.94%	0.48%	0.59%	0.35%	0.48%
Native Hawaiian/Pacific Islander											
# of Dropouts	1		3	1	6		3	1	13	2	15
Statewide Enrollment	99	87	91	80	79	78	81	62	350	307	657
DROPOUT RATE	1.01%	0.00%	3.30%	1.25%	7.59%	0.00%	3.70%	1.61%	3.71%	0.65%	2.28%
Hispanic											
# of Dropouts	417	240	759	488	801	547	731	447	2708	1722	4,430
Statewide Enrollment	21907	19978	20433	19589	19380	18597	17948	17462	79668	75626	155,294
DROPOUT RATE	1.90%	1.20%	3.71%	2.49%	4.13%	2.94%	4.07%	2.56%	3.40%	2.28%	2.85%
Multiracial											
# of Dropouts	45	27	42	40	60	40	81	46	228	153	381
Statewide Enrollment	2628	2478	2408	2320	2187	2214	2054	2061	9277	9073	18,350
DROPOUT RATE	1.71%	1.09%	1.74%	1.72%	2.74%	1.81%	3.94%	2.23%	2.46%	1.69%	2.08%
Totals											
# of Dropouts	1,129	706	1,999	1,421	2,233	1,629	2,344	1,417	7,705	5,173	12,878
Statewide Enrollment	82,567	76,983	79,713	75,899	76,661	74,308	76,878	73,167	315,819	300,357	616,176
DROPOUT RATE	1.37%	0.92%	2.51%	1.87%	2.91%	2.19%	3.05%	1.94%	2.44%	1.72%	2.09%
Special Population		EL		Migrant		FRL		IEP			
# of Dropouts		1161		3		10,083		3,023			
Statewide Enrollment		30,822		96		279,415		85,824			
Dropout Rate		3.77%		3.13%		3.61%		3.52%			

Data Source: Student Information System

**Selected School Report Card Variables and Statewide Trend Data
(105 ILCS 5/1A-4 & 5/2-3.11)**

Report Card Variable	2008-09	2009-10	2010-11	2011-12	2012-13	2013-14	2014-15	2015-16	2016-17	2017-18
Enrollment Percentage										
White	53.3%	52.8%	51.4%	51.0%	50.6%	49.9%	49.3%	48.8%	48.5%	48.0%
Black	19.1%	18.8%	18.3%	18.0%	17.6%	17.5%	17.5%	17.3%	17.0%	16.8%
Hispanic	20.8%	21.1%	23.0%	23.6%	24.1%	24.6%	25.1%	25.5%	25.7%	26.2%
Asian/Pacific Islander	4.1%	4.2%	n/a	n/a	n/a	n/a	n/a	n/a	n/a	n/a
Asian	n/a	n/a	4.1%	4.2%	4.3%	4.5%	4.6%	4.7%	4.9%	5.1%
Native Hawaiian/ Pacific Islander	n/a	n/a	0.1%	0.1%	0.1%	0.1%	0.1%	0.1%	0.1%	0.1%
Native American	0.2%	0.2%	0.3%	0.3%	0.3%	0.3%	0.3%	0.3%	0.4%	0.3%
Two or More Races	2.5%	2.9%	2.8%	2.8%	3.0%	3.1%	3.1%	3.2%	3.4%	3.5%
Total Enrollment ^a	2,070,125	2,064,312	2,074,806	2,066,692	2,054,155	2,046,857	2,054,556	2,041,779	2,028,162	2,005,153
Oper Expend Per Pupil ^b	\$10,417	\$11,197	\$11,537	\$11,664	\$11,842	\$12,045	\$12,521	\$12,821	\$12,973	\$13,337
Graduation Rate	87.1%	87.8%	83.8%	82.3%	83.2%	86.0%	85.6%	85.5%	87.0%	85.4%
Low-Income Enrollment	42.9%	45.4%	48.1%	49.0%	49.9%	51.5%	54.2%	49.9%	50.2%	49.4%
EL Enrollment	8.0%	7.6%	8.8%	9.4%	9.5%	9.5%	10.3%	10.5%	10.7%	11.7%
Dropout Rate	3.5%	3.8%	2.7%	2.5%	2.4%	2.2%	2.3%	2.0%	2.1%	2.1%
Chronic Truancy Rate	3.7%	3.6%	3.2%	8.6%	9.8%	8.7%	8.7%	9.8%	10.8%	11.2%
Mobility Rate	13.5%	13.0%	12.8%	7.6%	7.3%	7.0%	6.7%	6.9%	6.9%*	6.9%
Student Attendance Rate	93.7%	93.9%	94.0%	94.4%	94.2%	94.5%	94.2%	94.4%	94.0%	93.9%
Parental Contact	96.7%	96.2%	96.0%	95.3%	95.5%	95.7%	95.2%	95.3%	94.9%	89.0%
Average Class Size										
Kindergarten	20.5	20.7	20.9	20.9	21.1	21.2	20.7	20.4	19.1	19.0
Gr 1	20.9	21.2	21.6	21.2	21.5	21.6	21.6	21.4	19.8	19.0
Gr 3	21.8	22.1	22.3	22	21.9	22.5	22.4	22.5	20.8	20.0
Gr 6	22	21.5	22	22.4	23.1	23.1	22.7	22.7	21.3	21.0
Gr 8	21.4	21	21.3	21.5	22.2	22.6	22.2	21.8	20.6	20.0
High School	19.2	19.7	19.2	19.2	19.9	19.4	19.4	19	19.5	20.0

Note: Beginning in 2009, district statistics include charter school information.

^a Enrollment figures taken from the Illinois Report Card. Report Card enrollment is taken as of Oct. 1 and must be verified by the district superintendent. ^b Prior year expenditures.

* Beginning in FY 2017 the student mobility rate replaced the mobility incident rate. ISBE recalculated mobility rates back to FY 2012.

STUDENT PERFORMANCE

State Accountability Assessments

As part of the Illinois Accountability System, students in grades 3-8 take the Partnership for Assessment of Readiness for College and Careers (PARCC) consortium test, and beginning in 2017, high school students take the SAT. The PARCC consortium test and SAT replaced the previously required Illinois Standards Achievement Test (ISAT) and the Prairie State Achievement Exam (PSAE).

Statewide results provide a new baseline for measuring student progress and therefore cannot be compared to ISAT and PSAE scores. SAT scores should not be compared longitudinally to PARCC high school scores from 2015 and 2016 because PARCC high school assessments are course-based rather than grade-level-based. The PARCC high school assessment and SAT measure different groups of students on different content.

In grades 3 through 8, final district- and school-level results indicate student performance at five performance levels in English language arts and mathematics. In high school, results indicate student performance at four performance levels in English language arts and mathematics. The table below displays the statewide average percentage of students who meet or exceed standards.

<u>English Language Arts</u>	<u>2015</u>	<u>2016</u>	<u>2017</u>	<u>2018</u>
Grade 3	35.3	35.5	36.2	37.0
Grade 4	39.4	36.9	37.1	38.5
Grade 5	38.3	35.3	36.6	35.6
Grade 6	35.4	34.9	34.9	34.0
Grade 7	39.9	37.3	40.0	39.8
Grade 8	40.4	39.1	37.4	36.4
High School %	34.7	34.1	39.8*	36.9*
High School Score			511.5*	505.7*

<u>Mathematics</u>	<u>2015</u>	<u>2016</u>	<u>2017</u>	<u>2018</u>
Grade 3	34.5	39.6	39.2	37.8
Grade 4	27.9	30.5	30.8	31.5
Grade 5	26.9	31.7	29.6	30.8
Grade 6	27.2	28.7	28.1	26.9
Grade 7	27.5	27.3	27.2	30.7
Grade 8	32.1	31.8	32.3	30.5
High School %	18.7	21.8	36.4*	34.3*
High School Score			504.4*	501.3*

*Beginning in FY 2017, students took the SAT instead of the ACT

Dynamic Learning Maps (DLM)

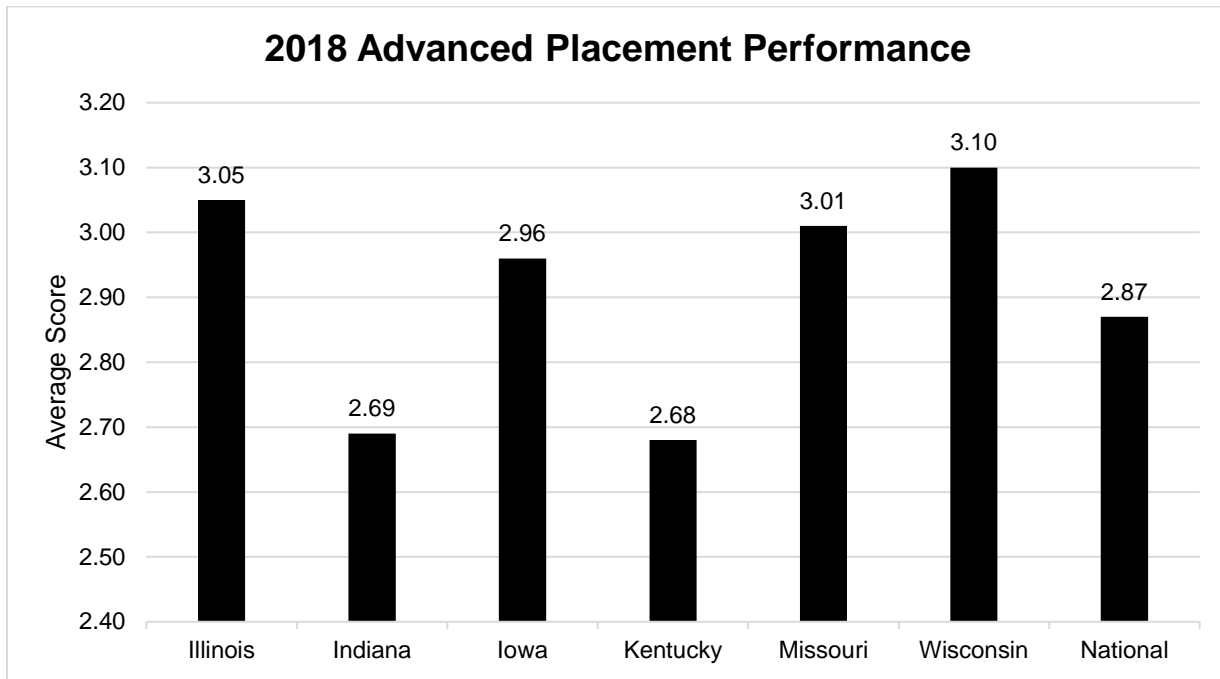
The Dynamic Learning Maps (DLM) assessment measures student performance on alternate content standards for students with the most significant cognitive disabilities – DLM Essential Elements. Essential Elements detail what children should know and be able to do at a particular grade level.

The Dynamic Learning Maps assessment replaced the Illinois Alternate Assessment (IAA) in 2016. Statewide results provide a new baseline for measuring student progress and therefore cannot be compared to IAA scores.

Final district- and school-level results indicate student performance at each of the five performance levels in English language arts and mathematics by grade level in elementary and high school. The table below displays the statewide average percentage of students who meet or exceed standards.

<u>English Language Arts</u>	<u>2016</u>	<u>2017</u>	<u>2018</u>
Grade 3	15.9	13.2	13.7
Grade 4	20.1	18.6	15.9
Grade 5	23.2	21.0	22.2
Grade 6	20.6	17.7	16.6
Grade 7	25.4	25.3	25.7
Grade 8	27.1	26.4	23.3
Grade 11	24.6	26.9	28.2

<u>Mathematics</u>	<u>2016</u>	<u>2017</u>	<u>2018</u>
Grade 3	15.6	12.6	14.0
Grade 4	18.4	19.8	17.8
Grade 5	13.1	8.7	10.6
Grade 6	11.7	10.0	9.4
Grade 7	6.2	5.2	5.8
Grade 8	10.7	7.2	7.2
Grade 11	4.0	5.1	5.3



Data Source: 2018 College Board AP Summary Reports

National Assessment of Educational Progress (NAEP) Average Student Scores for Illinois and U.S. Public Schools

	<u>2009</u>	<u>2011</u>	<u>2013</u>	<u>2015</u>	<u>2017</u>
<u>Reading</u>					
Illinois Grade 4	219	219	219	222	220
U.S. Grade 4	220	220	221	221	221
Illinois Grade 8	265	266	267	267	267
U.S. Grade 8	262	264	266	264	265
Illinois Grade 12	292	n/a	289	n/a	n/a
U.S. Grade 12	287	n/a	287	n/a	n/a
<u>Mathematics</u>					
Illinois Grade 4	238	239	239	237	238
U.S. Grade 4	239	240	241	240	239
Illinois Grade 8	282	283	285	282	282
U.S. Grade 8	282	283	284	281	282
Illinois Grade 12	n/a	n/a	154	n/a	n/a
U.S. Grade 12	n/a	n/a	152	n/a	n/a
<u>Science</u>					
Illinois Grade 4	148	n/a	n/a	151	n/a
U.S. Grade 4	149	n/a	n/a	153	n/a
Illinois Grade 8	148	147	n/a	150	n/a
U.S. Grade 8	149	151	n/a	153	n/a

Data Source: National Center for Education Statistics, Institute of Educational Sciences

National Assessment of Educational Progress (NAEP) Comparison of Illinois and U.S. Achievement Gaps

<u>Grade 4</u>	2017 Reading		2017 Math		2015 Science	
	<u>Illinois</u>	<u>U.S.</u>	<u>Illinois</u>	<u>U.S.</u>	<u>Illinois</u>	<u>U.S.</u>
White	232	231	249	248	166	166
Black	199	205	217	223	125	133
Hispanic	209	208	227	229	137	139
Asian	244	241	263	260	173	169
American Indian/Alaska Native	*	203	*	228	*	139
Native Hawaiian/Other Pacific Islander	*	210	*	228	*	143
Two or More Races	219	226	243	244	152	158

<u>Grade 8</u>	2017 Reading		2017 Math		2015 Science	
	<u>Illinois</u>	<u>U.S.</u>	<u>Illinois</u>	<u>U.S.</u>	<u>Illinois</u>	<u>U.S.</u>
White	275	274	291	292	162	166
Black	246	248	257	260	126	132
Hispanic	258	255	272	268	139	140
Asian	292	283	314	312	163	166
American Indian/Alaska Native	*	253	*	268	*	139
Native Hawaiian/Other Pacific Islander	*	254	*	272	*	138
Two or More Races	279	270	287	285	*	159

* Reporting standards not met as the sample n-size was insufficient to permit a reliable estimate.

Data Source: National Center for Education Statistics, Institute of Educational Sciences

EDUCATORS

Number of Select Public School Personnel by Gender Full-Time Equivalents (FTE) 2017-18 (105 ILCS 5/2-3.11)

Staff Category	Male	Female	Total
Prekindergarten Teachers	16	1,393	1,409
Kindergarten Teachers	156	3,925	4,081
Elementary Teachers (1-8)	11,173	53,355	64,528
Secondary Teachers (9-12)	13,370	15,883	29,253
Special Education Teachers	3,684	18,846	22,530
District Superintendents	495	190	685
Principals	1,680	1,958	3,638
Assistant Principals	990	1,337	2,327
Supervisors	791	1,740	2,531
Other Administrators	863	872	1,735
School Service Personnel	<u>4,323</u>	<u>35,921</u>	<u>40,244</u>
Total Public School Personnel	37,541	135,420	172,961

Nonpublic School Personnel Full-Time Equivalents (FTE) 2017-2018 (105 ILCS 5/2-3.11)

Staff Category	FTE
Prekindergarten Teachers	1,891.5
Kindergarten Teachers	1,178.3
Elementary Teachers (1-8)	8,496
Secondary Teachers (9-12)	4,116.6
Special Education Teachers	431
Administrative Staff (includes Principals and Assistant Principals)	2,472.3
Pupil Personnel Services Staff	771
Support Staff	4,749.9
Supervisory Staff	<u>877.7</u>
Total Nonpublic Personnel (FTE)	24,984.3

Data Source: 2017-18 Nonpublic Registration, Enrollment and Staff Report

**Salaries for Select Full-Time Equivalent Public School Personnel
2017-18
(105 ILCS 5/2-3.11)**

Staff Category	Median	Mean
Prekindergarten Teachers	\$49,550	\$52,850
Kindergarten Teachers	\$57,458	\$60,603
Elementary Teachers (1-8)	\$59,968	\$63,602
Secondary Teachers (9-12)	\$67,223	\$72,847
Special Education Teachers	\$59,087	\$63,598
District Superintendents	\$152,283	\$161,560
Principals	\$105,560	\$108,919
Assistant Principals	\$88,204	\$93,456
Supervisors	\$98,280	\$101,163
Other Administrator	\$102,346	\$105,784
School Service Personnel	\$26,100	\$40,846

Data Sources: Educator Information System, Illinois Report Card

Public School Pupil-to-Teacher Ratios

School Year	Elementary	Secondary
2017-18	20.1	20.0
2016-17	18.7	19.4
2015-16	18.7	18.9
2014-15	18.5	18.4
2013-14	18.6	18.1
2012-13	18.7	17.9
2011-12	18.9	18.8
2010-11	18.8	18.9
2009-10	18.2	18.2
2008-09	18.4	18.0
2007-08	18.3	18.0

Data Source: Illinois Report Card

Educator Licenses Issued By Evaluation, Entitlement & Exchange
(105 ILCS 5/2-3.11)

Licenses	2013-14	2014-15	2015-16	2016-17	2017-18
Evaluation	5,275	10,664	21059	20,501	22,563
Entitlement	5,657	4749	6011	5,392	4,876
Exchange	<u>112,380</u>	<u>206</u>	<u>895</u>	<u>952</u>	1,834
Total	123,312	15,619	27,965	26,845	27,439

Note: Prior to FY 2014, educators were issued certificates. An educator licensure system began in FY 2014, at which time all certificates were converted to licenses.

Educator Licenses Issued by Type

Licenses	2013-14	2014-15	2015-16	2016-17	2017-18
Professional Educator License	10,932	7,447	7,667	7,116	6,807
Educator License with Stipulations (ELS) - Provisional Educator	104,525	1,167	2,700	1,548	1,884
Substitute Teacher License	7,855	10,111	10,074	9,972	10,916
Short-Term Substitute Teacher License					0
ELS-Paraprofessional					7,037
ELS-Transitional Bilingual	515	444	508	355	352
ELS- Career and Technical Educator					264
ELS- Visiting International Educator					49
ELS- Provisional In-State Educator					7
APE					119
CSBO					4
Total	123,312	18,725	20,441	18,636	27,439

Note: Prior to FY 2014, educators were issued certificates. An educator licensure system began in FY 2014, at which time all certificates were converted to licenses.

Educator Endorsements Issued By Type
(105 ILCS 5/2-3.11)

Endorsements	2013-14	2014-15	2015-16	2016-17	2017-18
Elementary	1,392	3,283	3,524	3,347	2,964
Secondary	4,499	5,349	2,625	3,564	2,914
Middle Grade/Middle School					4,060
Early Childhood	1,208	438	677	599	721
Special	7,032	2,682	3,622	2,686	816
School Service Personnel	1,809	1,225	1,298	1,190	1,171
Administrative	3,984	1,595	1,843	1,126	1,324
Substitute	7,855	10,111	10,078	9,972	10,916
Other (Paraprofessional, Career and Tech, etc.)	3,029	6,081	6,435	6,855	7,832
Special Education- other than LBSI	224	78	72	75	53
LBSI	3,090	2,536	2,399	2,214	2,280
ESL	11,741	3,715	4,191	3,538	3,077
bilingual	2,148	1,240	1,364	1,106	1,014
Short Term Emergency Approvals	108	20	26	42	68
Short Term Approvals	N/A	N/A	N/A	23	198
Total	30,808	30,764	30,102	29,339	32,226

Notes: Prior to FY 2014, educators were issued certificates. An educator licensure system began in FY 2014, at which time all certificates were converted to licenses. 2013-14 and 2014-15 data were updated.

Educator Licensure Tests Administered by Test Fields
(105 ILCS 5/2-3.11)

Test Field	2013-14	2014-15	2015-16	2016-17	2017-18
Basic Skills: TAP	11,848	22,081	6,084	1,016	4,650
edTPA					4,368
Early Childhood	469	662	561	459	708
Elementary	2,813	3,138	2,769	2,180	8,869
Special Education - all categories	1,845	3,466	3,308	2,012	3,496
Sciences - all disciplines	583	549	569	375	695
Math & Computer Science	441	515	467	305	621
Foreign Languages - all languages	301	465	368	270	344
English, Speech, Media, Reading, EL	1,379	1,565	1,414	1,642	1,577
History & Social Science	770	782	738	529	890
Art, Music, Theatre, Dance	446	569	428	450	508
Vocational/Technical - all fields	187	298	135	124	416
Health & Physical Education	569	542	486	367	415
School Service Personnel - all fields	810	1,265	831	1,198	1,332
Administrative - all types	1,253	947	1,942	1,323	2,873
Language Proficiency	561	949	787	627	910
Assessment of Professional Teaching	7,252	7,220	2,038	337	929
Other	<u>0</u>	<u>0</u>	<u>0</u>	<u>321</u>	<u>22,723</u>
Total	31,527	45,013	22,925	13,535	56,324

Note: Prior to FY 2014, educators were issued certificates. An educator licensure system began in FY 2014, at which time all certificates were converted to licenses.

**National Board-Certified Teachers
Certification Earned in Illinois**

Year	Newly Certified	% Change From Prior Year	Cumulative Growth
2017-18	337	2,963.6	6,399
2016-17	11	-74.4	6,062
2015-16	43	-79	6,051
2014-15	205	-21.5	6,034
2013-14	261	-40.1	6,025
2012-13	436	-5.4	6,100
2011-12	461	-40.2	5,842
2010-11	771	5.3	5,155
2009-10	732	4.1	4,694
2008-09	704	37.8	3,924
2007-08	511	18.6	3,192
2006-07	431	36.8	2,492
2005-06	315	-23.7	1,986
2004-05	413	n/a	1,573
1993-2004	1,240	n/a	1,238

Note: Changes in state funding for the Illinois Candidate Fee Subsidy and changes in the National Board's certification process and timeline have impacted Illinois' numbers of candidates each year.

Expenditures to National Board-Certified Teachers

Year	Mentoring	Registrations	Annual Stipends	Total
2017-18	\$0	\$1,000,000	\$0	\$1,000,000
2016-17	0	1,000,000	0	1,000,000
2015-16	0	1,000,000	0	1,000,000
2014-15	0	1,000,000	0	1,000,000
2013-14	0	1,000,000	0	1,000,000
2012-13	0	1,000,000	0	1,000,000
2011-12	0	1,000,000	0	1,000,000
2010-11	0	0	2,756,400	2,756,400
2009-10	0	0	5,740,730	5,740,730
2008-09	2,616,000	667,000	8,202,000	11,485,000
2007-08	1,273,500	2,866,960	6,294,000	10,434,460
2006-07	783,000	2,183,500	5,164,109	8,130,609
2005-06	730,000	0	3,874,995	4,604,995
2004-05	530,865	834,135	3,240,000	4,605,000
1993-2004	765,500	3,229,590	4,620,000	8,615,090

Note: Public Act 097-0607 eliminated the annual stipend for Illinois Master Certificate holders effective July 1, 2011.

SPECIAL EDUCATION SERVICES

Students with Disabilities Receiving Special Education Services Ages 3-21 Unduplicated Count (105 ILCS 5/2-3.11)

Disability Category	2013-14	2014-15	2015-16	2016-17	2017-18
Autism	20,506	21,893	23,252	24,503	25,754
Cognitive Disability (MR)	17,773	17,629	17,012	16,341	15,715
Deaf-Blind	34	32	27	24	28
Deafness	608	606	575	544	545
Developmental Delay	31,501	34,287	35,859	36,649	37,586
Emotional Disability	19,602	19,668	19,270	18,692	18,440
Hearing Impairment	3,145	3,097	3,091	2,994	2,876
Multiple Disabilities	2,553	2,689	2,735	2,829	2,856
Other Health Impairment	31,246	33,114	34,759	35,685	37,135
Orthopedic Impairment	1,515	1,409	1,312	1,225	1,124
Specific Learning Disability	102,737	103,710	103,606	102,335	101,388
Speech/Language	56,804	54,981	53,486	50,579	49,917
Traumatic Brain Injury	738	715	699	682	661
Visual Impairment	<u>1,125</u>	<u>1,123</u>	<u>1,107</u>	<u>1,086</u>	<u>1,041</u>
Total	289,887	294,953	296,790	294,168	295,066

Students with Disabilities by Gender Ages 3-21 Unduplicated Count (105 ILCS 5/2-3.11)

Gender	2013-14	2014-15	2015-16	2016-17	2017-18
Male	194,020	197,366	198,143	196,017	196,273
Female	<u>95,867</u>	<u>97,587</u>	<u>98,647</u>	<u>98,151</u>	<u>98,793</u>
Total	289,887	294,953	296,790	294,168	295,066

Students with Disabilities by Race/Ethnic Group
Ages 3-21 Unduplicated Count
(105 ILCS 5/2-3.11)

Race/Ethnicity Groups	2013-14	2014-15	2015-16	2016-17	2017-18
American Indian or Alaska Native	1,461	1,628	1,554	1,109	849
Asian	6,470	6,621	6,857	7,162	7,545
Black or African American	59,548	61,401	61,485	59,365	58,508
Hispanic or Latino	61,292	64,128	65,965	73,668	75,748
Native Hawaiian or Other Pacific Islander	387	443	390	258	256
Two or More Races	9,036	9,665	10,269	10,676	11,148
White	<u>151,693</u>	<u>151,067</u>	<u>150,270</u>	<u>141,930</u>	<u>141,012</u>
Total	289,887	294,953	296,790	294,168	295,066

Students with Disabilities by Age
Unduplicated Count
(105 ILCS 5/2-3.11)

Age	2013-14	2014-15	2015-16	2016-17	2017-18
3	9,122	9,166	9,575	8,929	9,043
4	12,933	12,967	13,076	13,113	12,591
5	15,323	15,612	15,228	15,225	15,503
6	17,037	17,155	16,651	16,664	16,811
7	18,556	18,832	18,817	18,689	18,479
8	19,638	20,240	20,727	20,233	20,263
9	20,784	21,034	21,415	21,565	21,413
10	20,797	21,476	21,542	21,544	21,947
11	20,304	20,987	21,660	21,251	21,687
12	20,572	20,681	21,077	21,335	21,265
13	20,526	20,814	20,802	20,825	21,428
14	19,973	20,663	20,725	20,324	20,605
15	20,204	20,287	20,659	20,383	20,066
16	19,743	20,184	19,905	20,060	19,869
17	18,127	18,757	18,896	18,443	18,667
18	9,918	9,632	9,634	9,415	9,333
19	3,269	3,207	3,120	2,945	3,027
20	1,774	1,902	1,874	1,824	1,733
21	<u>1,287</u>	<u>1,357</u>	<u>1,407</u>	<u>1,401</u>	<u>1,336</u>
Total	289,887	294,953	296,790	294,168	295,066

Students with Disabilities Exiting School
Ages 14-21 Unduplicated Count
(105 ILCS 5/2-3.11)

Reason for Exiting School	2013-14	2014-15	2015-16	2016-17	2017-18
Certificate of Completion	175	177	202	814	306
Died	61	76	76	84	55
Dropped Out of School	2,883	3,570	2,872	2,650	2,775
High School Diploma	14,392	13,708	13,484	11,364	15,916
Moved, Continuing School	6,056	8,453	8,747	7,358	7,540
Reached Maximum Age	530	657	655	567	354
Returned to Regular Education	<u>2,497</u>	<u>2,360</u>	<u>2,334</u>	<u>3,012</u>	<u>1,606</u>
Total	26,594	29,001	28,370	25,849	28,552

Students with Disabilities by Primary Language
Ages 3-21 Unduplicated Count
(105 ILCS 5/2-3.11)

Primary Language	2013-14	2014-15	2015-16	2016-17	2017-18
American Sign Language	36	38	37	110	97
Arabic	578	648	730	2,005	2,164
Assyrian	93	101	124	294	272
Cambodian	26	27	28	64	66
Cantonese (Chinese)	171	175	184	260	224
Croatian	8	10	8	21	28
English	256,179	258,359	257,986	228,274	201,585
French	68	68	73	221	231
German	21	18	23	69	68
Greek	56	72	74	241	216
Gujarati	139	141	146	368	395
Hindi	50	60	75	242	306
Hindustani	0	0	0	0	0
Italian	35	37	48	164	147
Japanese	31	35	43	81	70
Kashmiri	0	0	0	0	0
Korean	77	96	105	250	255
Lao	14	13	19	80	78
Lithuanian	32	33	42	123	130
Mandarin (Chinese)	80	100	114	307	350
Others	1,034	1,139	1,294	3,178	35,197
Pilipino	195	226	257	798	768
Polish	793	846	941	1,969	1,940
Romanian	64	80	93	188	199
Russian	122	145	167	409	433
Spanish	29,479	31,959	33,592	53,098	48,469
Urdu	346	355	403	988	1,031
Vietnamese	<u>160</u>	<u>172</u>	<u>184</u>	<u>366</u>	<u>347</u>
Total	289,887	294,953	296,790	294,168	295,066

**Students with Disabilities Receiving Related and Other
Special Education Services
Ages 3-21 Duplicated Count
(105 ILCS 5/2-3.11)**

Related and Other Services	2013-14	2014-15	2015-16	2016-17	2017-18
Acquisition of Daily Living Skills	950	899	866	842	740
Adapted Driver Education	9	5	10	25	30
Adapted Physical Education	6,690	6,628	6,453	6,511	6,338
Aide - Class	46,542	46,086	44,227	43,556	38,325
Aide - Individual Student	15,033	16,379	16,724	17,431	8,918
Art Therapy	256	248	186	168	170
Assistive Device	16,528	17,289	15,952	15,255	2,644
Audiology	3,275	3,585	3,542	3,271	2,650
Behavioral Intervention Plan	17,623	17,967	17,334	171,488	16,134
Braillist/Reader	93	101	92	81	80
Career and Technical Education	1,385	1,268	1,268	1,234	1,019
Competitive Employment	200	132	149	130	82
Counseling Services	12,289	12,630	13,291	13,944	13,890
Consultant Services	2,178	2,004	2,066	1,910	1,993
Interagency Linkages	730	723	780	683	650
Interpreter Services	1,001	973	907	824	634
Music Therapy	368	380	262	391	328
Occupational Therapy	46,126	48,830	51,059	52,235	46,892
Orientation and Mobility	783	797	772	764	698
Other Related Services	3,755	3,631	3,671	3,337	2,915
Outdoor Education	60	25	33	44	48
Parent Counseling	310	272	226	254	195
Psychiatric Services	578	524	463	389	329
Physical Therapy	13,015	13,203	13,267	13,324	12,345
Psychological Services	3,251	3,200	3,190	2,930	1,639
Recreation	120	87	68	82	107
School Health Services	14,267	15,580	15,931	16,206	8,774
Social Work Services	78,007	81,830	83,047	84,870	67,812
Speech/Language Services	83,193	87,778	90,162	92,437	83,751
Students reported with no related services	105,658	105,585	105,045	103,781	144,340
Supported Employment	366	393	288	374	406
Supports for Transition to Post-Sec. Ed. Transition/STEP by Div of Rehab Services	2,201	2,032	1,816	1,709	1,637
Transportation (Special)	21,736	23,533	22,987	22,366	3,805
Travel Training	61,856	63,882	63,650	63,209	53,361
	189	159	150	122	113

Note: This chart states the number of related and other services reported for eligible students by school districts. One student could be reported as receiving up to eight services.

Educational Placement of Children with Disabilities
Ages 3-5 Unduplicated Count
(105 ILCS 5/2-3.11)

Educational Environment	2013-14	2014-15	2015-16	2016-17	2017-18
Early Childhood Program: At least 80% of time	n/a	n/a	n/a	9	n/a
Early Childhood Program: 40% - 79% of time	n/a	n/a	n/a	1	n/a
Early Childhood Program: less than 40% of time	n/a	n/a	n/a	3	n/a
Regular Early Childhood Program: At least 10 hours per week and receiving the majority of Spec. Ed. and related services in the regular Early Childhood Program	11,793	12,773	13,555	13,999	14,299
Regular Early Childhood Program: At least 10 hours per week and receiving the majority of hours of Spec. Ed. and related services in some other location	8,892	8,555	8,297	8,439	8,728
Regular Early Childhood Program: Less than 10 hours per week and receiving the majority of hours of Spec. Ed. and related services in the regular Early Childhood Program	820	865	831	901	837
Regular Early Childhood Program: Less than 10 hours per week and receiving the majority of hours of Spec. Ed. and related services in some other location	1,454	1,442	1,409	1,281	1,318
Separate Class	9,840	10,155	9,943	9,325	8,221
Separate School	1,080	692	728	632	1,034
Residential Facility	8	13	15	14	7
Home	92	86	93	102	110
Service Provider Location	<u>3,399</u>	<u>3,164</u>	<u>3,008</u>	<u>2,561</u>	<u>2,583</u>
Total Ages 3-5	37,378	37,745	37,879	37,267	37,137

**Educational Placement of Children with Disabilities
Ages 6-21 Unduplicated Count
(105 ILCS 5/2-3.11)**

Educational Environment	2013-14	2014-15	2015-16	2016-17	2017-18
Inside Regular Class 80% or more of day	133,910	135,721	136,311	134,901	135,483
Inside Regular Class 40-79% of day	65,493	67,243	67,881	67,932	68,147
Inside Regular Class less than 40% of day	33,255	34,044	34,415	34,530	34,103
Separate School	14,375	14,641	14,615	14,738	15,449
Residential Facility	1,221	1,172	1,027	888	488
Homebound/Hospital	405	424	405	384	396
Correctional Facilities/ Detention Programs	233	218	167	84	17
Parentally Placed in Private Schools	<u>3,617</u>	<u>3,745</u>	<u>4,090</u>	<u>3,442</u>	<u>3,846</u>
Total Ages 6-21	252,509	257,208	258,911	256,899	257,929

**Teachers Employed to Provide Special Education Services
Full-Time Equivalents (FTE)
(105 ILCS 5/2-3.11)**

	2013-14	2014-15	2015-16	2016-17	2017-18
Teachers for Ages 3-5 (Highly Qualified)	1,526.4	1,402.6	1,346.9	1,342.8	1,643.5
Teachers for Ages 3-5 (Not Highly Qualified)	18.9	9.4	6.3	6.6	1.0
Teachers for Ages 6-21 (Highly Qualified)	20,810.0	21,170.8	21,630.0	18,059.0	21,872.1
Teachers for Ages 6-21 (Not Highly Qualified)	<u>1,233.0</u>	<u>288.0</u>	<u>344.7</u>	<u>210.9</u>	<u>43.1</u>
Total Special Education Teachers	23,588.3	22,870.8	23,327.9	19,619.2	23,559.6

**Paraprofessionals Employed to Provide Special Education Services
Full-Time Equivalents (FTE)
(105 ILCS 5/2-3.11)**

	2013-14	2014-15	2015-16	2016-17	2017-18
Paraprofessionals for Ages 3-5 (Highly Qualified)	3,659.0	5,044.9	5,351.8	4,720.8	3,574.9
Paraprofessionals for Ages 3-5 (Not Highly Qualified)	0.0	678.8	566.8	519.7	1.0
Paraprofessionals for Ages 6-21 (Highly Qualified)	32,655.9	23,449.6	23,986.3	23,728.3	28,474.0
Paraprofessionals for Ages 6-21 (Not Highly Qualified)	<u>0.0</u>	<u>4,518.8</u>	<u>3,565.6</u>	<u>3,730.8</u>	<u>47.9</u>
Total Special Education Paraprofessionals	36,314.9	33,692.1	33,470.5	32,699.6	32,097.8

**Special Education and Related Services Personnel
Full-Time Equivalents (FTE)
(105 ILCS 5/2-3.11)**

	2013-14	2014-15	2015-16	2016-17	2017-18
Audiologists	34.8	34.9	30.8	31.6	39.2
Counselors & Rehabilitation Counselors	780.6	972.0	973.9	374.8	467.8
Interpreters	196.1	223.8	213.9	202.7	227.9
Medical/Nursing Service Staff	630.6	571.7	548.0	413.4	620.0
Occupational Therapists	1,007.1	996.3	955.6	894.2	1,000.2
Orientation & Mobility Specialists	23.4	22.0	20.7	19.1	18.6
Physical Education Teachers/ Therapeutic Recreation Specialists	214.2	217.8	215.6	206.3	206.2
Physical Therapists	372.1	374.4	331.0	308.3	321.0
Psychologists	2,104.1	2,172.5	2,128.6	1,900.6	2,066.2
Social Workers	3,251.1	3,287.5	3,202.4	2,911.3	3,261.6
Speech-Language Pathologists	<u>3,742.5</u>	<u>3,899.4</u>	<u>3,957.8</u>	<u>3,635.8</u>	<u>3,943.7</u>
Total Related Services Personnel	12,356.5	12,772.1	12,578.3	10,898.1	12,172.6

Mandated Categorical Grants Rate Analysis
(105 ILCS 5/2-3.104)

Program	Reimbursement Rate (amount)	School Code Reference	Last Rate Change to School Code
Illinois Free Lunch/ Breakfast	\$0.15 per meal	105 ILCS 125	PA76-875 Effective August 1969
Regular Ed. - Orphanage	1.2 weighted per capita multiplied by reported ADA. Demonstrated actual costs above weighted formula are reimbursed to 100%. Separate summer claim reimbursed at actual cost.	105 ILCS 5/18-3	PA95-0793 Effective August 2009
Special Ed. - Orphanage	Actual cost for education and transportation Separate summer claim reimbursed at actual cost.	105 ILCS 5/14-7.03	PA79-797 Effective July 1973
Special Ed. - Private Tuition	Actual tuition cost paid less 2 district per capita tuition amounts.	105 ILCS 5/14-7.02	PA80-1405 Effective August 1978
Special Ed. - Transportation	80% of allowable cost	105 ILCS 5/14-13.01(b)	Laws of 1965 Effective July 1965
Vocational Ed. Transportation	80% of allowable cost	105 ILCS 5/29-5	Laws of 1961 Effective March 1965
Regular Ed. Transportation	Actual costs less EAV qualifying amount for eligible students (min \$16 per student).	105 ILCS 5/29-5	Laws of 1961 Effective March 1965

Notes:

- ADA: Average Daily Attendance
- EAV: Equalized Assessed Valuation

Teachers' Retirement Systems

The purpose of these funds is to pay the statutorily required state share of the actuarial liability of the Teachers' Retirement System, including the Teachers' Retirement Insurance Program, and to subsidize the Chicago Teachers' Pension Fund (Public Act 88-593).

These funds are appropriated directly to the Teachers' Retirement System and the Chicago Teachers' Pension Fund. The following represent historical appropriation amounts as shown in the Illinois State Budget Books:

Fiscal Year	Non-Chicago System	Chicago System	Total Appropriations	Pension Fund
2018	\$4,209,483,859	\$11,692,000	\$4,221,175,859	\$11,692,000
2017	\$4,096,286,351	\$12,186,000	\$4,108,472,351	\$12,186,000
2016	\$3,850,960,455	\$12,105,000	\$3,863,065,455	\$12,105,000
2015	\$3,513,861,000	\$62,145,000	\$3,576,006,000	\$12,145,000
2014	\$3,529,008,000	\$11,903,000	\$3,540,911,000	\$11,903,000
2013	\$2,790,161,000	\$10,931,000	\$2,801,092,000	\$10,931,000
2012	\$2,494,094,000	\$10,449,000	\$2,504,543,000	\$10,449,000
2011	\$255,953,000	\$42,971,400	\$298,924,400	\$10,449,000
2010	\$913,868,667	\$37,551,400	\$951,420,067	\$5,029,000
2009	\$1,527,263,000	\$74,844,700	\$1,602,107,700	\$9,800,000
2008	\$1,109,891,000	\$75,262,700	\$1,185,153,700	\$10,218,000

* Teachers' Retirement Insurance Program (below) included in the above Non-Chicago System Totals for the following fiscal years.

Teacher Retirement Insurance Program (TRIP)

2018	\$114,167,713
2017	\$109,703,000
2016	\$108,258,261
2015	\$100,983,000
2014	\$90,430,000
2013	\$86,683,000
2012	\$87,622,000
2011	\$85,953,000
2010	\$79,007,000
2009	\$75,474,000
2008	\$68,596,000

Note: Appropriations for FY 2008 through FY 2018 revised to reflect Illinois Office of the Comptroller. In FY 2018, the Chicago System also received \$221.3 million from ISBE's FY 2018 Evidence-Based Funding appropriation that is not reflected above.

Source: Illinois Office of the Comptroller

Amounts and percentages may not sum to totals based on rounding.



Illinois State Board of Education

2018 Annual Report

Published by the Office of Communications, January 2019